



Findon

May
2016

The community newsletter
For Findon,
West Sussex

Editor: Nick Gore

News

*Findon News is published monthly and is available free of charge from various outlets throughout Findon and can be viewed on the Findon Parish Council website - findon.arun.gov.uk
Findon News does not endorse any advertisements published. No responsibility will be taken for errors, omissions or any claims made by contributors. Opinions expressed are not those of the publisher.*

Articles for publication (**maximum 650 words**) can be submitted by email to findonnews@zoho.com, or via the 'Findon News Box' in the Village Newsagents.

Closing Date For Next Publication: 20th May 2016

Findon Parish Council

Invites All Parishioners To The
Annual Parish Meeting
Thursday 19 May @ 7pm

Findon Village Hall

This is an opportunity to share a glass of wine with your Councillors and hear about many of the opportunities to get involved with village life!

Guest speakers, Tony Steer, Chairman of Bolney Parish Council, will be talking about how Volunteering can enhance our village and strengthen our community, and Richard Bell will be introducing the New Findon Village Community Website.

Members of the many local organisations and groups in Findon will also be on hand to update you on what has been happening.

Findon is a fabulous place to live so please come along, say hello and exchange ideas for current and new initiatives - with your support Findon will grow from strength to strength!

The photograph (right) printed on the front page of the March edition is still generating interest.

Bob Fell of Ashington confirms the sheep belonged to Mr. Oscar Pyle of Angmering. Apparently the men driving the sheep are Mr Morris Booker & Mr Joe Elliot. The photograph featured in the Southern Weekly News, 21st September 1935!



Findon Parish Council Report – April 2016

The work on the Pre-school building, removing and replacing rotten timbers and installing new guttering has been completed, this should keep the building operable for another couple of years until the pre-school committee find a more permanent solution.

A new noticeboard has been installed on Nepcote Green, entirely funded by the family of John (Johannes) and Maureen Tinner. It should only be used for formal notices of village events rather than semi-permanent advertising, and keys for the notice board are currently held by myself, the Parish Clerk, Judith Davis and Mike Solomon.

The South Downs report on our emerging Neighbourhood Plan was presented by the Strategic Planning Officer to the SDNPA Planning Committee on the 14th April in Midhurst. Their report was critical of our view that, for diverse reasons, it has not been possible to designate sites for 20 houses either within or outside the current settlement boundary, but did accept that we had met the crucial 'Basic Conditions' of creating a Neighbourhood

Plan, which allows the Parish Council to ask that it be submitted to an independent examiner for review. I spoke on behalf of the council to defend our submission, and we will have a meeting with the relevant officers from SDNPA week commencing April 25th to review their arguments and call for sites data before making a final decision on submission.

A Planning and Finance meeting will be held in the village hall on April 28th at 7.30pm.

Our Annual Parish Meeting is scheduled for May 19th at 7pm. Our Guest Speaker is Tony Steer, Chairman of Bolney Parish Council, who has chosen to speak on 'Volunteering'. Tony is a dynamic speaker who I'm sure will delight everyone who can attend. FPC will be providing wine and nibbles at the break once our main speakers have sat down. Please do your best to attend and support all the village organisations who will be there.

Peter Goldsworthy
Chairman, FPC

Summer Revels Requests

St John the Baptist School PTA would like to ask readers of Findon News for help with the following Revels items:

- Please can anyone donate cakes for the cake stall?
- Look out for raffle tickets in village shops and buy what you can. Some great prizes on offer!
- Can you donate anything nice for the tombola stalls (children's or adult's)?

Come On The Day & Enjoy The Fun!

Saturday 21 May:	11.00am	- Procession from School & Country Dancing on Pond Green
	11.30am	- Return to school for Maypole Dancing
	12.00-4.00pm	- Summer Fayre on School Field

Contact PTA Chairman Sadie with any offers of help (07753 567977)



FINDON VILLAGE SCHOOL'S SUMMER REVELLS

SATURDAY 21ST MAY 12-3 PM

FUN & GAMES

Fairground Rides
Bouncy Castles
Assault Course
Balloons & Fun Activities
Football Challenges
Circus Performers

STALLS & DISPLAYS

Hawking About Birds of Prey
Go Karting
'Have A Go' Archery
Face Painting
Live Swing Bands
Maypole Dancing



FOOD & DRINK

BBQ, Pimms & Beer Tent
Tea & Cakes, Ice Creams and Candy Floss

**COME AND JOIN THE
FAMILY FUN**

St John The Baptist CofE Primary
School, School Hill, BN14 0TR



Sponsored by
Joint Downland
Area Committee



LOTTERY FUNDED

Bus stop suspensions – A24

West Sussex County Council has temporarily suspend a number of bus stops on major roads where buses have to stop on the inside lane.

This action follows an incident in January when a van collided with a bus that stopped to pick up passengers in Washington, injuring nine people.

Some bus stops on dual carriageways do not have laybys, forcing buses to stop on the inside lane of the carriageway. The safety review concluded that these bus stops are a road safety risk.

The more local stops affected are:

A24 between Findon and Washington: Worthing Crematorium (northbound), North End/Worthing Crematorium (southbound), North End (northbound), North Farm (northbound) North Farm (southbound), Windlesham House School (northbound).

A24 between Washington and Buckbarn: Washington Roundabout (northbound), Washington Roundabout (southbound), Rock

Summer Fair and Dog Show

11th June 2016 11.00am – 5.00pm

**Clapham and Patching Village Hall
Long Furlong, Worthing BN13 3UT**

Dog Show, Craft Market,
Fancy Dress Competition,
Funfair and traditional games
A variety of refreshments available

A fun day out for all the family

For more information:

www.rowlandsingers.co.uk

Road (northbound), Spring Gardens (southbound), Old Barn Nursery (northbound).

Other bus stops on the A264 and A259 have also been affected - travellers are advised to check with the Bus operator if they are unsure of restrictions.

Bus operators and WSCC are working together to identify alternative arrangements.

Findon Parish Council have requested an urgent meeting with WSCC to discuss the impact this decision is having on local residents and businesses.

Pure Chocolate Truffles

Locally produced chocolate truffles without any colourings, additives or preservatives.

Free delivery to Findon village

www.purechocolatetruffles.co.uk or contact Kim on 01903 873829

TEP (Traffic Environment People)

Traffic And Village Enhancement Workshop

Tuesday 10th May 2016

at 7.30pm at Findon Village Hall.

If you are interested in hearing greater detail about the proposals in smaller groups or bringing along your own ideas, the TEP would love to see you.

Or please write to us at findonparishcouncil@gmail.com

Your support is needed. Thank you.

Findon Community Website Update

A short presentation of the Findon Community Website will be made at the Annual Parish Meeting on Thursday 19th May. Do come along for a pre-view to see how the website will look.

The website Steering Group are aiming for a 'going live' date of 1st June. This will be announced through our Facebook page [Findon Village Website] as well as in next months edition of Findon News.

Richard Bell

Findon Sheep Fair Stewards

Stewards are required for Findon Sheep Fair
10th/11th September 2016...

All welcome, come and be an integral part
of this unique Village Festival.

Saturday and Sunday Slots available.

Please contact Lesley Chamberlain 01903 872440





Teatime-Sussex

Afternoon Tea To Your Door

Your Vintage Tea Party Includes:

- ☞ Tasty Sandwiches ☞
- ☞ Scones with Jam and Cream ☞
- ☞ Delicious Homemade Cakes ☞
- ☞ A Selection of Teas ☞

Pretty vintage china, cutlery,
cloths and decorations

Free local area delivery & collection

Telephone: 07717 949990
email: linda@teatime-sussex.co.uk
www.teatime-sussex.co.uk

Lamb to Loom Coffee Morning

Saturday 4th June

10.30am - 12.00 midday

Findon Village Hall - Entrance Free

In addition to our delicious home made
cakes and scones, there will be Ewes and
their Lambs, A Shepherd to chat to, and
Jenny will give a spinning demonstration

Offington Park Gardening Services

All gardening work undertaken

7 days a week service

£11.00 per hour (minimum 2 hours a day)

Telephone Andrew

01903 261044

Mobile 07770 670801



Findon Swimmingpool

at St John the Baptist Primary School Findon Village



Heated • Clean • Safe • Supervised • Open TO ALL • Private Hire



**Monday-Saturday
3:30pm-4:30pm Open to all**

Subject to weather and volunteer supervisor availability

£15 per family per year £10 for up to two people

(children under 14 must join with an adult)

Members: **£1.20** per swim

Non members: **£2.50** per swim

(children under 10 must be accompanied by an adult).

Membership forms are available from the Poolside, Village shops or Sarah Skelding,
Swimming Pool Secretary 07954 995718

Private Hire

When not open to the public Findon Pool is available for private hire, subject to the availability of our volunteer first-aid-trained supervisors. The cost is **£40** for 2 hours, **£15** per hour thereafter. For bookings, contact Sarah Skelding.

<https://twitter.com/findonpool>

www.findonswimmingpool.co.uk

www.facebook.com/FindonVillageSwimmingPool

Built by people in the village, Run by people in village, Serving the local community

Findon Pool Celebrating 50 Years!

Findon Village Pool was built by villagers in 1966, and has been run ever since by a huge number of dedicated volunteers. The current committee is hoping to track down as many previous volunteers as possible to join in this year's celebrations. Did you used to be on the Pool committee, perhaps a supervisor, part of the water-testing and maintenance team, or even someone who helped build the pool? Please contact Jacqui Greaney if you have any information about who has been involved over the years (872599, 07877 969580, jacadihan@yahoo.com).

Details of the pool's birthday celebrations will follow in next month's Findon News.

Due to popular demand there are plans this year to re-start the weekly Adult Swim. Please contact Gay Hibbs if you are interested

(geraldandgay@gmail.com).

This session is dependent on at least two new volunteers training as first aiders so please contact new Chairman Sean Smith if you'd like to sign up for this (sean.l.smith@icloud.com).

There is currently much activity behind-the-scenes by a dedicated team of people working to get the pool ready to open this month. Keep an eye on the pool website and Facebook page for up-to-date news, and of course the board on the school driveway, to find out when the pool is open.

Fingers crossed for a nice summer!



DOMESTIC HEATING & ELECTRICAL SERVICES LTD

We offer a wide number of services:

Gas boiler installations, servicing and repairs; Gas fire servicing & repairs; Gas hob repairs & replacements, Gas certificates; Landlord certificates; Electrical Installations - including fuse boards, heating, lighting and fault finding.

Anything from the smallest of dripping taps.

Friendly free advice on energy efficient products and updates.



01903 872828

enquiries@domesticheatingservices.co.uk

www.domesticheatingservices.co.uk

1-2 Findon Forge, Nepcote Lane,
Findon Village BN14 0SE



Property FOR SALE in your area.....



Links Road

An extremely spacious contemporary modern detached family home, situated in one of Worthing's most prestigious areas by Worthing Golf Course. Franklands offers attractive open plan living, a favoured east/west aspect, six bedrooms, three bathrooms and four reception rooms. Internal features include vaulted ceilings, wood burners, superb gallery landing. Outside are well proportioned secluded gardens, sweeping driveway and double garage.

£1,250,000

If you are looking for a local, professional estate agents to sell your property, then please call us today on 01903 872 949.

For a free, no obligation valuation, contact your local, award-winning office today.

FINDON OFFICE 01903 872 949 | www.michaeljones.co.uk



michael
JONES

News from PAWS Animal Sanctuary

When you retire you expect to take life easy. Sheila and I have never worked so hard since we both retired!

The mornings begin with all the animals and poultry wanting attention, the hens cluck to be let out, the donkey braying as soon as he sees you, and the cats meow wanting their breakfasts. As soon as we open the barn door where all the guinea-pigs live they too start squeaking in unison. All think the more noise you make the quicker you will be fed. Luckily we have a wonderful band of Volunteers, but we have a rule that we all start work at the same time, otherwise if someone decides to come in early and the donkey catches sight of a food slave he will alert all the others.

Once the hens are let out fed and watered, and the donkey and pony have their hay nets, things get quieter, but then the telephone and mobile phones start to ring non-stop with calls about injured birds, missing cats, unwanted pets, people wanting pets. Saturday is always busy. Recently a plumber rang to say the house next door to where he was working was empty and the fishpond had lots of fish flapping about, he thought the pond must be leaking, could we go and rescue them. I was currently on my way to Brent Lodge Wildlife Hospital in Sidlesham with an injured Collared Dove so I asked him to keep topping up the pond. I had also promised to go and microchip two dogs at The Old Gardens Animal Rescue in Sidlesham, and to pick up a puppy. As usual Sheila was up to her eyes in letters and paperwork as well as answering the phones and the door to the never ending stream of visitors - even though we say we are only open to visitors on Sundays. Its important we always have one of us here in case of emergencies and the

every day drama's. There are always some!

Anyway, as luck would have it, before I left I put an emergency "Can anybody help"? message on facebook, and a lady answered immediately who had a large pond and would rescue the fish. The Plumber met her and so the fish were saved. I told them they were both hero's.

We have a board to write our shopping list on for when we run out of supplies. Every week we buy 15 sacks of cat litter, cat pouches, cat biscuits, dog food, hay, straw, horse food, rubber gloves, black bags, kitchen towels, disinfectant, wild bird seed and fat balls.

We use so many vegetables a day: cucumbers, celery, apples, greens and carrots.

Most of the daily jobs are collecting and washing eggs, shopping for veg, dropping off and collecting animals at the Vets. All the animals are groomed every day, and the tortoises have baths. We also have gerbils, hamsters, quail and lots of resident dogs and cats that need feeding.

People ring and say I sent you an email and haven't had a reply yet thinking we have time to sit down every day and read them! It is usual to see 144 - 160 emails! Most emails start, "Do you have any kittens/dogs?" Sheila hates the computer and won't go anywhere near it, she especially hates Facebook. Yesterday Sheila came over to help feed the animals in the evening, she had paint spots all over her face from painting her sheds. In the office we have a pad with a list of jobs waiting to be done. Written on the bottom is "to do in your spare time", Spare time! What's that?

Stacey



Local Mobile Hairdresser



We all need to feel special occasionally, what could make you feel that way more than having your own personal Hair Stylist come to your home? Fully Qualified, Fully insured and a member of the Freelance Hairdressers Association. 10% off your first appointment.

Services:

Cut & Blow Dry, Sets, Perms, Colouring (using L'oreal),
Hair Extensions, Brazilian Blow Drys, Hair Up

Call Rita on 07881 863271

Dog friendly Holiday Home in Findon

The Haven @ Findon is a modern 2 bedroom bungalow in Findon village that sleeps up to 4 people and is ideally situated for family and friends (and their dogs) visiting relatives, attending weddings, parties or just wanting a weekend break or holiday. It is available on a self-catering basis from a minimum 3 night stay.

We are rated 'Excellent' on Trip Advisor and AirBNB.

You can visit our website -www.thehavenfindon.uk or for more details or enquiries phone Steve on 07590533892

JULIE JORDAN

Professional Curtain Maker
and

Interior Design

Phone for free estimates

01903 263823

07801687155

Juliejordan100@yahoo.co.uk

Offington Park Decorating

Exterior & Interior Painting/Decorating Services
£11ph Labour Charge (client pays all materials)

Large & Small Contracts Welcome

Telephone Andrew

01903 261044

Mobile 07770 670801



Bob Hendy Electrician

Installation / Re-Wiring

Appliance repairs

Security Lighting

24 Hour service

01903 877204

07850771246

FINDON SMALL WORKS BUILDING COMPANY

BRICKWORK, PAVING, POINTING,

FLINT WORK, EXTENSIONS

HEDGES, LAWNS, GARDEN CLEARANCE

LANDSCAPING, ODD JOBS

NO JOB TOO SMALL

CALL PAUL 07939 210354 OR 01903 872147

Readers' Dogs Meet Milo!

Milo [photo right] belongs to Ian & Fiona Withey.

Milo, a small bundle of black & white fluff, arrived in our lives as a surprise gift in January 2015. As I am sure many canine carers will agree, dogs, like our much-loved new member of the family reminds us how to live in the moment. Findon's down land provides the perfect home for Milo who loves nothing better than running through the long grass on Cissbury Ring, true to his Working Cocker Spaniel roots and he has made many friends 'on the green' with whom he loves to meet & play



~~~~~  
Don't forget to submit a picture of your dog to feature in "Readers' Dogs".

Photographs must include a background that is recognisable as having been taken in Findon.

Pictures and a short résumé about your canine friend should be sent through to the Findon News email address - [findonnews@zoho.com](mailto:findonnews@zoho.com) - or hardcopy via the "Findon News" box in the Findon newsagency.

*When emailing please submit photos as a separate high resolution JPEG file.*

If we get enough entries we'll aim to publish a 2017 calendar to raise funds for the Findon PAWS Animal Sanctuary.

### Findon Village Carpet Bowls Group

Meet On Monday Afternoon 2.30 – 4pm

In Findon Village Hall

We are currently looking for new members to join the group  
Beginners Welcome

We are a friendly group who play non competitively  
Just for fun

**£2 Per Session**

If you are interested in giving it a try, please contact Kathy or Geoff on 01903 873294 or just turn up.

### Findon Fun Dog Show

Saturday 16th July 2016

Following the success of last years event, we are now taking bookings for this year.

For entry forms contact Judith on 07917 821977  
e-mail [judithjda@btinternet.com](mailto:judithjda@btinternet.com)



Are you at Work all Day?

Going away?

Or just too busy?

The National Pet Care Company

Dog holidays with Host families

Cat Care, Pet Feeding

**The Complete Pet Service**

**Pet Taxi/Ambulance**

**Tel: 07974 532078**

[info@westsussex.animalsathome.co.uk](mailto:info@westsussex.animalsathome.co.uk)

[www.animalsathome.co.uk/west-sussex](http://www.animalsathome.co.uk/west-sussex)

## Veterinary Advice

We have had an exceptionally busy month at Findon with MANY emergencies coming through the door (everyone is fine!) Including my own dog Phoebe (a 10 month old spaniel) who had to have surgery to remove parts of rubber toy from her stomach. Thankfully she was back to being perky within half an hour of the surgery being completed! The Clinic has also had a camera crew filming us, and we should be making an appearance on TV later in the year (we will keep you updated!)

Many thanks to all my clients who have been very patient whilst I was performing surgeries and dealing with emergencies that resulted in consults running late.

This month I thought could discuss a condition which is seen frequently in the surgery: **Diabetes mellitus**.

This condition is recognised in humans as well as animals and clinical signs can be similar.

It occurs when the body is unable to control the level of sugar, specifically glucose, in the blood.

Insulin is the name of the hormone produced by the pancreas which is released depending on the blood glucose levels - a low production of insulin, or a lack of bodily response to insulin is when diabetes mellitus occurs.

There are two types of diabetes in dogs and cats:

Insulin deficiency - where the pancreas does not produce enough insulin - is the most common type affecting dogs. Although usually irreversible it can be managed with insulin injections. This is similar to Type 1 diabetes in humans (often seen in children). ▶



**Happy Hound**  
Pet Services

- 🐾 Dog Walking
- 🐾 Overnight Pet Boarding
- 🐾 Pet Taxi Service
- 🐾 Pop in Home Visits
- 🐾 Holiday Drop in and Feeding for Domestic Pets
- 🐾 Pet Sitting

Fully Insured  
DBS Checked  
NARPSUK Registered  
Pet First Aid Trained

[www.hhpetservices.co.uk](http://www.hhpetservices.co.uk)  
[jules@hhpetservices.co.uk](mailto:jules@hhpetservices.co.uk)  
**01903 251 305**



# Clean Cut Gardening Services

- Mowing
- Hedge cutting
- Tree surgery
- Turf laying
- Shingle & bark laying
- Weed killing
- Power washing patios & drives
- Gutter clearance
- Rubbish & house clearance

**Friendly, reliable & fully insured**

**01903 899592**

[www.cleancutgardening.co.uk](http://www.cleancutgardening.co.uk)  
[lukebrice@cleancutgardening.co.uk](mailto:lukebrice@cleancutgardening.co.uk)



Insulin resistance - where the body responds poorly to the insulin produced. The pancreas cannot produce sufficient insulin to overcome the poor response. This is the most common type seen in cats and it can be managed. This is similar to type 2 diabetes in humans which is often diagnosed in older patients, and associated with obesity.

The average age of diagnosis of diabetes mellitus is 11.6 years in cats and 9.5 years in dogs. It is estimated that 1 in 200 cats and 1 in 300 dogs currently suffer with the disease.

There are many factors associated with the development of diabetes mellitus - in particular a sedentary lifestyle and obesity for both cats and dogs.

Yorkshire Terriers and Burmese cats are thought to be at a higher risk whereas Labradors and German Shepherds are underrepresented in studies.

Clinical signs are: Increased drinking, frequent urinating and eating, depression, a sudden onset of cataracts (in dogs). Vomiting, weakness and seizures occur in severe cases.

These signs are not specific for diabetes mellitus but if your animal is showing these symptoms then it is wise to make an appointment for a health check.

Diagnosis involves blood tests and urine samples which are easily carried out in the surgery.

Should an animal be diagnosed with diabetes mellitus then often insulin injections are required to manage the condition. As daunting as this sounds the nurses at the clinic will demonstrate how to give injections, and you can practise on oranges/rubber balls before giving the first injection to your animal! The nurses will also give consults regarding diet and exercise - both being important.

After diagnosis there will be follow up appointments to make sure insulin levels being administered are correct - this is checked with blood tests and urine samples. Once stabilised your pet will need to be monitored every couple of months with a full clinical exam and to make sure everyone is happy!

If you are concerned about your pet showing signs of diabetes then make an appointment to see a vet and get an MOT! A urine sample brought with you (not in a jam jar or anything which has contained sweet things) is helpful.

Crossways are organising a 'Garden Party' to be held at our Storrington branch on Sunday June 5th. We will be holding a Crossways Dog Show and will have stalls, face painting and food. All proceeds going to the 'Hounds for Heroes' charity. Further details will be available on our facebook page.

Tania Parsons BVSc MRCVS  
Crossways Veterinary Group  
Findon Practice Tel. 01903 877325  
*Emergency cover is available 24 hours a day, 365 days a year. Out of hours call the number and follow the instructions given.*

Action Medical Research

**May Fayre**

**Saturday 14<sup>th</sup> May**

**2.15pm - 4.15pm**

All Saint's Church Hall, Findon Valley

Refreshments, Cakes, Plants, Books,  
Toys, Jewellery, Bric-a-Brac, Crafts,  
Action Stall, Tombola & Raffle

Please Come And Join Us

**200 CLUB**

Winners of the April £25 draw

**148 – P Jezard**

## Findon Accountancy

Chartered Certified Accountants  
Findon based, reasonable rates  
Full range of business & personal accounting and  
taxation services available

Ken Elliott FCCA, FCIS

Telephone 01903 872589

Email: [kenelliott@findonaccountancy.co.uk](mailto:kenelliott@findonaccountancy.co.uk)

Web: [www.findonaccountancy.co.uk](http://www.findonaccountancy.co.uk)

### ALL CLEAR GARDEN SERVICES

\*\* Lawn Mowing \*\*

\*\* Hedge Cutting \*\*

\*\* Garden Tidy's \*\*

CONTACT: Wayne Hardie

TEL:- 07733105548,

email: [whardie09@btinternet.com](mailto:whardie09@btinternet.com)

### FINDON CLEANING

Regular Cleaning  
(2 Hours Minimum)

Shopping. Ironing  
& Gardening

Please Call Sue

**01903 691656**

**07565 571778**

### Astracolour Photographic and picture framing

(Eric Beadel L.M.P.A & Edward Beadel - Partner)

[www.astracolour.co.uk](http://www.astracolour.co.uk)

We specialise in Wedding photography and picture framing.

A full portfolio is available to view.

Tel: for an appointment day or evening.

Copying and restoration of your old photo's and instant passport photo-  
graphs (4 for £8.00)

35 The Quadrangle, Findon Village Tel: 01903 877677

*Nanny Sue's Best Eggs*

[www.Facebook.com/NannySuesBestEggs](http://www.Facebook.com/NannySuesBestEggs)

**Findon Free Range Eggs**

South Lodge Cottage, Rogers Lane, Findon, BN140RE  
Tel 01903 872970 Mob 07855 846963

## Easter at Findon

Lots of children joined in with the Easter themed crafts at Findon Village Hall on Good Friday. They also made an Easter Garden to display at Church.

After tasty hot cross buns, the cross was carried in the village procession to Pond Green where there was a short service with songs, to help everyone think about the real meaning of Easter.

On Easter Saturday the church was open for people to admire the beautiful Easter flower displays, and enjoy some tea and cake.

On Easter Day, children enjoyed hunting for Easter eggs after the Service!

Reverend Helena Buqué.



---

## Findon Friends of St Barnabas House

We are holding A **Skittles and Supper Evening** (7.00pm for 7.30pm) on **Friday 13th May at the Black Horse, Findon** as a fun and fund-raising evening.

Tickets are £12.50 each - food included - numbers are very limited due to space! There will be a raffle too!

For tickets - Phone Mike on 01903 877255 or Richie 01903 877930

---

**For all your home water needs,  
speak to the professionals - UKh<sup>2</sup>o**

### **Water softeners**

installation, servicing and salt

### **Filtered drinking water systems**

and boiling water taps

### **Kitchen and bathroom design**

plus installation

### **Heating and plumbing services**



01903 500 551 | [www.ukh2o.com](http://www.ukh2o.com)  
50 Ferring St, Ferring, West Sussex BN12 5JP



# A Gardener's View

First I would like to do a quick business pitch if you don't mind... due to the huge success of both my Garden Association talk and appearing on TV with Monty Don, my business has taken off in ways I could only dream of when I first started. Due to the high demand I've been receiving I have joined forces with my father who has been running a successful lawn mowing service for over 20 years. I have also hired a professional team to undertake hedge trimming and tree surgery. My personal garden maintenance round is currently fully booked but please feel free to phone and I can put you in the diary for when a space becomes available. Garden designs are also available from a complete makeover to border plans and designs. Basically I would like to now offer Findon my new complete garden service.

We had some lovely days in April. Perfect weather for repairing my back fence in the sensory garden that storm Katie smashed down, and the hail showers didn't do much good for early germinating vegetables, but May is here and it seems everywhere you look plants are popping up and borders are filling up nicely. The garden is taking a real turn for the better. As the weather is warming

up it should be safe to start planting out summer bedding and sowing direct into the ground. I'm not a big fan of bedding but can see how if arranged well in a beautiful pot there are few plants that can match the instant wow factor of colour. This year we have dedicated one of the vegetable beds to be a cut flower patch (my wife is a keen florist). In the autumn I planted rows of tulips and they have done well providing lovely displays in the house, but I could have done it better. Planting in rows made for a lot of wasted space and now I'm having to remove some in order to plant other plants such as agapanthus and sweet Williams. The idea is to put aside my mono culture vegetable rows and plant the bed like a little cottage garden with hazel wigwams of sweet peas and bright garish but beautiful and fun Dahlias. The sensory garden is beginning to take shape again but perhaps if I was to go back in time I would have planted less grasses as they don't look very nice until much later in the year. Saying this few plants give me as much joy and look as good as grasses in the winter months. So perhaps not.

As the garden bulks out so do the weeds! It is important to keep on top of them with regular hoeing and hand weeding. ►



## **JOSHUA THE GARDENER & CO**

Professional organic gardener,  
garden design and creative maintenance  
RHS trained and qualified

**07780332452**

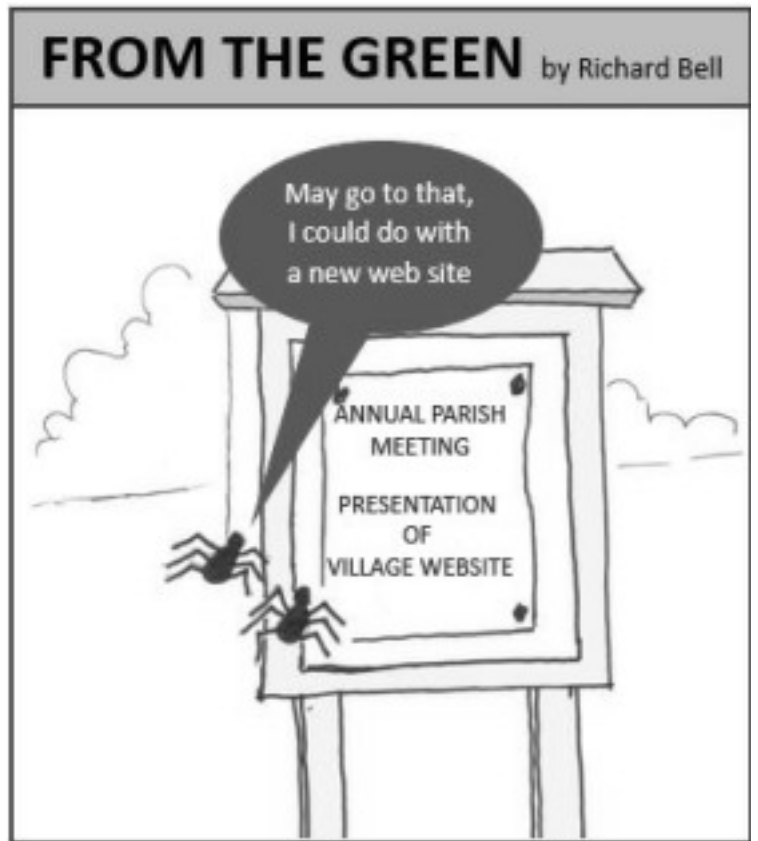
( for lawn services call Robert: )  
**07787727883**

**joshuathegardener@gmail.com**  
**www.joshuathegardener.co.uk**



I've spotted the "round up" advert on TV which boasts that "with one touch of round up weeds die and never come back". What it doesn't say in the advert is that there are tens of millions of weed seeds in the soil just waiting to come up. The best job for weeding is your hands along with a good hand fork and a hoe. However, weeds that come up in your paving or drive are best sprayed with a weed killer. I know this isn't very organic but the use of weed killer to kill a few in your patio far out ways the impact to the environment in laying a new one. I had the ivy removed from one of my trees recently and it is very important to check for nesting birds before you start any hedge trimming or pruning. All the best and happy gardening.

Joshua (the Gardener)



Village House Hotel  
The Square  
Findon Village BN14 0TE

# VILLAGE HOUSE

## Events in May

\*\*\*\*\*

Tuesday Nights  
Wok 'n' Roll Menu  
East meets West  
Asian & American  
dishes

Bank Holiday  
Sunday May 29th  
Live music from  
"Smileys"  
Johnny Cash Tribute  
from 8:30pm

Wednesday Nights  
Homemade  
Thai Dishes  
2 Courses  
from £14-95

\*\*\*\*\*

**Tel. 01903 873350**

[www.villagehousefindon.co.uk](http://www.villagehousefindon.co.uk)



# What's your property worth?

Even if you're not planning to sell or let your home and would just like to know its value, contact your local office today to arrange your free, no obligation valuation

FINDON OFFICE 208 Findon Road, Findon Valley BN14 0EJ

**01903 872 949** | [michaeljones.co.uk](http://michaeljones.co.uk)



michael  
**JONES**

Worthing | Lancing | Goring | Findon | Broadwater | Rustington | Littlehampton |



## Thank You

Sharon & Wayne would like to thank all our wonderful family & friends for their love and support, good wishes and huge practical support over the last few weeks. It has certainly aided our

recovery and will never be forgotten.

Thank you so much.

Findon, what a wonderful place to live!!

Sharon Cairns & Wayne Flynn  
Downview Road, Findon

---

## Findon Village Store & Post Office

We are now entering May and there is light at the end of our tunnel as we are reaching the final stages of the refurbishment.

Still cosmetic work to be completed and some finishing touches to be added, but in the main, the large and structural changes have been completed.

We fully appreciate it has been pure chaos at times (and not just for you as customers!!) so thanks for sticking with us and providing us the positive compliments, support and good humour that have kept us going.

We also want to say a very special thanks to all those that have come to Gayle's rescue (or rather those that she has accosted either in the pubs or when coming in to shop!) to help her move heavy fridges or units! It really is a community Village Store!

And it is with that sentiment in mind that once again we would like to reiterate to you that if you have any suggestions for stock/product lines that you would like to see sold in the store, please come in and talk to Gayle.

We are aware that due to changes in suppliers as well as general market changes (and our need to have deliveries not clash with our workmen!!)

our stock has been slightly varied and in some cases limited of late...now works are nearing completion, we are hoping to get back to some form of normality but please, please do talk to Gayle or Steve if there is something we can get in for you – there may be times when it is not always possible but we will always try!

So...what's next...

The summer sun and the return of the Ice Cream machine...with a (chocolate) twist!! Come & check it out!

### **We are closed from 12pm on 4th May**

It is with great sadness that we advise you that due to the recent passing of Mrs Gwynn Harwood (Julian's Mum), the shop and Post Office will be closed on the afternoon of Wednesday May 4th 2016 so that we may pay our respects at her funeral.

Gwynn was a huge part of our community, running the shop and post office with her late husband and their son Julian for many years. She will be greatly missed by all who knew her. Our thoughts are with Julian and family at this sad time and we thank our customers for their understanding.

Dave & Gayle

## **Findon Post Office & Newsagency - Tel. 01903 873364**

Continuing to provide all Post Office, Banking, Newspaper,  
Confectionary & Tobacco requirements.

Fresh bread & milk daily. Now also offering Dry Cleaning service in partnership  
with Bonetti's of Findon Valley.

**Findon Dog Walking  
and Pet Minding**

Including caring for animals  
in your own home  
Considerate to the needs of you  
and your animals  
Excellent references  
Fully Insured  
For further information please  
Contact  
872730 or 07533845904



Unit 28  
Guildbourne Centre  
Worthing  
(opposite Wilkinsons)

**Beautiful, Affordable Jewellery & Gifts  
For Men & Women**

Sterling Silver, Gemstones, Glass & Pearls  
Gents' Stainless Steel Range  
Interesting & Unusual Giftware  
Greetings Cards & Gift Accessories

**Tel: 01903 218994    [www.sewsilver.co.uk](http://www.sewsilver.co.uk)**

**Andrew Cooper**

Carpenter and Joiner  
City and Guilds qualified  
Specialising in:  
Custom made doors & windows  
Fitted furniture,  
Bespoke Kitchens  
Free Estimates,  
References available,  
guaranteed work  
Based in Ferring  
Tel: 01903 610343  
Mob: 07766253893  
[www.andrewcooperjoinery.co.uk](http://www.andrewcooperjoinery.co.uk)

**KJ ROBERTS**

**Property Maintenance  
and Electrical services**

Friendly locally based tradesman.  
Interior/exterior decorating, tiling,  
flooring, bathrooms, kitchens, decking,  
patios, fencing and any odd jobs  
All Electrical work undertaken (NICEIC  
registered)

No job too small, Free estimates.

**Tel Findon 873913**  
**mobile 07947233424**  
**Email [jankevrob@aol.com](mailto:jankevrob@aol.com)**

**F Silverthorne  
Fishmongers**

Quality Fish Est. 1907  
145 Montague St, Worthing  
**Deliveries to Findon**  
(Thursday & Friday Mornings)  
**Tel. 01903 200854**  
Call by 9:30am on the day,  
or the day before your delivery

**Ex BT Telephone Engineer  
For All Residential Problems**

Faultfinding - Broadband -  
Alarm & Sky  
Interactive Sockets  
Plus Both Internal & External Cables



For Advice - Prices - Quotes

**Please Call: 07946 640285**  
**Email: [exbtsd@sky.com](mailto:exbtsd@sky.com)**  
**[www.xbttelephones.freeindex.co.uk](http://www.xbttelephones.freeindex.co.uk)**

## Findon Planning Applications

Planning applications for Findon are under the authority of South Downs National Park and listed on the SDNPA website ([www.southdowns.gov.uk](http://www.southdowns.gov.uk)).

Since the last issue of Findon News the following Planning Applications have been posted on the SDNPA website:

**To provide 5 new affordable houses to the land behind 2 Beulah Terrace and to utilize the land owned by Arun.**

Land Behind 2 Beulah Terrace School Hill Findon BN14 0TR

Ref. No: SDNP/16/01558/OUT

**Single storey side and rear extension and room in roof with hip to gable and rear dormer**

32 The Oval Findon BN14 0TN Ref. No: SDNP/16/01533/HOUS

**Two storey side extension and hall extension to front to replace porch.**

17 The Oval Findon BN14 0TN Ref. No: SDNP/16/01515/HOUS

**Replacement of old garage with a new flint and slate one**

1 Elder Cottages Nepcote Findon BN14 0SD

Ref. No: SDNP/16/01410/HOUS

**Lawful development certificate for proposed loft conversion with rooflights**

Treetops Cross Lane Findon BN14 0UG Ref. No: SDNP/16/01338/LDP

**Erection of a dwelling with associated holiday let in place of an existing dwelling, the erection of 3 no. dwellings on the land currently occupied by the former racing stable yard, the erection of new stable yard with grooms accommodation and relocation of existing manège.**

Soldiers Field Stables Soldiers Field Lane Findon BN14 0SH

Ref. No: SDNP/16/01552/PRE

~~~~~

Findon Parish Council Planning Committee meetings are scheduled monthly to consider planning applications received from the South Downs National Park Authority. The Parish Council is a statutory consultee on such matters. Members of the public are welcome to attend the meetings, and take part in the Public Question Time item. Planning Committee Agendas are displayed on the Parish Council Notice Boards outside the newsagents and the Village Hall and published on the web site (<http://findon.arun.gov.uk>) 3 working days before each meeting. Residents are asked to check the Notice Boards and web site regularly to view scheduled/additional/cancelled meeting details and Agendas.

Findon Parish Council Planning Committee Meetings are held in Findon Village Hall at 7.30pm. The next two meetings are:

26 May - Main Hall
23 June - Committee Room

*Please Note:
Meetings may be cancelled if
there is no business to transact.*

NEXT DATES FOR MESSY CHURCH

Tuesday 3 May & 7 June
3.30 - 5.45pm, Findon Village Hall

More information from Helena at the Rectory (01903 873601)





T Gladwish

Home Improvements

General home repairs and odd jobs

Furniture assembly

Tiling / Grouting

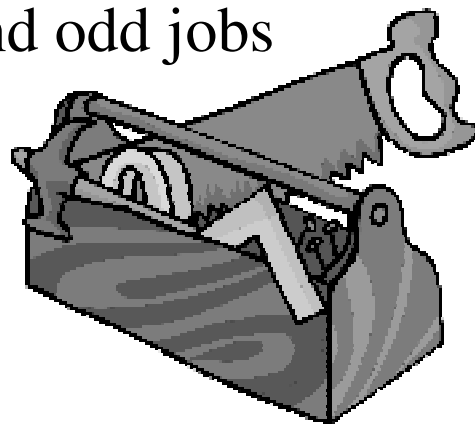
Shelving / Unit fittings

Painting / Decorating

Gardening services

Bathroom /kitchen refits

And many other household jobs undertaken...



Call Tony on: 0778 4935036

**OVER 25 YEARS OF DEALING
IN TOP QUALITY ANTIQUES &
INTERIOR DESIGNER FURNITURE
AND OBJECT D'ART.**

Our Services: Free Valuations
Insurance Valuations
Silver & Gold Polishing
Furniture Restorations
Buy and Sell
New items weekly

2THE SQ
By Adam Collard Antiques & Interiors

2 THE SQUARE
FINDON VILLAGE BN14 0TE

01903 872205 / 07740 947847

adamcollard71@yahoo.co.uk
facebook/byadamcollard

www.adamcollard.com
twitter/2thesquare

Crime Watch

No crime reported for this period.

It's that time of the year again !!

As the weather gets warmer (hopefully) many of us will be out working in or just enjoying our gardens. Unfortunately, this is also the time that break ins and thefts of tools, light machinery and lawnmowers from outbuildings and sheds tend to increase. Below are some tips you may find useful:

Keep hedges and fences well maintained to stop unwanted visitors entering your garden, and close your garden and/or side gate, locking it from the inside if you can. Avoid leaving your house doors and windows open or unlocked when working in the garden. Always put tools and equipment away in secured storage – items left outside could be stolen or even used to help a thief break in. The use of close shackle padlocks to secure sheds, together with the installation of shed alarms and security lights, will help deter would be burglars.

Lawn mowers and other large machinery should be disabled when not in use and if felt necessary, items chained together to a solid anchor point.



Record details of your property (make, model, serial number, any identifying marks) and take photos of items for easy identification. You can register valuables on the National Property Database at www.immobilise.com

You can report crime and incidents by ringing the 101 telephone number or online at www.sussex.police.uk/reportonline. If you see any people acting suspiciously and you believe a crime is in progress or about to occur call 999.

If you would like any crime prevention advice, please contact PCSO Paul Bryant on 07785 393824 or call the 101 telephone number.

Please check the FPC web site for recent events or latest alerts at <http://findon.arun.gov.uk>



MONARCHS WAY
Wellbeing Clinic

36 Cross Lane, Findon Village

**Sports & Therapeutic Massage therapies for
general aches and pains, arthritis, sports,
recreational and occupational injuries, stress and
stress related conditions and general wellbeing.**

By appointment only – please call 07841 636727

www.monarchswayclinic.co.uk

DOMESTIC & COMMERCIAL ELECTRICIAN



A Fuseboard
Specialist

- Replacement Consumer Units
- Full / Partial Rewiring
- Alterations & Additions
- Fixtures & Fittings
- Test & Inspection
- Landlord Condition Reports
- PAT Testing
- Emergency Lighting
- Exterior Fittings

Covering Worthing & Surrounding areas, we treat your home or business as if it was our own.

For all of your electrical needs including PAT Testing Management & Service look no further.

We cover all jobs no matter how big or small!

We offer 24/7 emergency call out - Emergency repairs, replacement parts are carried just for that situation!

NO OBLIGATION, FREE QUOTATIONS

Qualified to City & Guilds standards,
Part P Certified & Fully Insured ... Giving you peace of mind.

Tel: 01903 255357

Mob: 07833 259653

Web: www.afuseboardspecialist.com



Findon Downs WI

Jan Mackrell was our speaker in April, she told us of her work as a Parish Councillor. Findon Parish Council was formed in 1894, and 11 Councillors manage the various committees which look after differing aspects of the village from Wattle House restoration to drainage and flooding; planning applications to "Traffic Environment People" - a relatively new committee hoping to tackle the ever growing problem of traffic congestion in the village.

All Councillors are volunteers, as are many villagers who help on various committees.

The annual parish meeting will be on Thursday 19th May, 7pm when all aspects of the village will be reported. All villagers are invited.

Photographs of the village included one of "Rose Cottage" where the Mitchell family lived from 1913-1943.

Next Meeting – Tuesday 10th May 2.30pm Findon Village Hall . Discussion of Resolutions and talk by the PDSA.

Findon Village WI

At our April meeting, we were introduced to Bella; a working search dog. Bella came along with her handler Bob Crawford, who told us all about their working life together and what happens behind the scenes to keep our country safe from terrorism. How very lucky we are to have them!!!

May 12th is our resolutions meeting where we will be discussing the resolutions that will be taken to the WI AGM in June in Brighton.

All visitors welcome, from 7.30pm in the Village hall.

Enquires to

findonvillagewi@hotmail.co.uk

Find us on Facebook...FindonvillageWI

THE MALAYSIAN TEA COMPANY

FINDON BASED & SELLING SINGLE
ESTATE PREMIUM QUALITY TEAS



Tea Bags: These double-chamber black-tea bags use the finest Orange Pekoe tea leaves
Also available as Earl Grey and in other Fruit flavours.

Loose Leaf Black Tea: Available in both Orange Pekoe & BOPF (Broken O P Fannings)



**GROWN IN THE CAMERON HIGHLANDS SINCE 1933
AVAILABLE NOW AT FINDON POST OFFICE**

**CAMERON VALLEY MALAYSIAN TEAS
ONE KUALA LUMPUR OR TWO?**

The Train Takes The Strain

by Valerie Martin

Not many are aware that a train track, (albeit a small one), was laid in Findon in the 1930's. In the spring and summer in 1931, road widening was proceeding near the now long gone Triangle area.

Where was the Triangle you are asking?

When I first arrived in Findon some 22 years ago, I was befriended by the late Betty Ockendon who told me that the Triangle had been a well-known landmark in the village for many years. It was so called because of the clump of trees in the shape of a triangle that divided the ways at the Nepcote Corner and the main London road. It presented a sharp bend on the main Worthing to Horsham road, and in the thirties it was proposed to put the wheels of progress into action and commence the process of rounding off the area.

A stout flint wall about a metre high encompassed the Triangle itself.

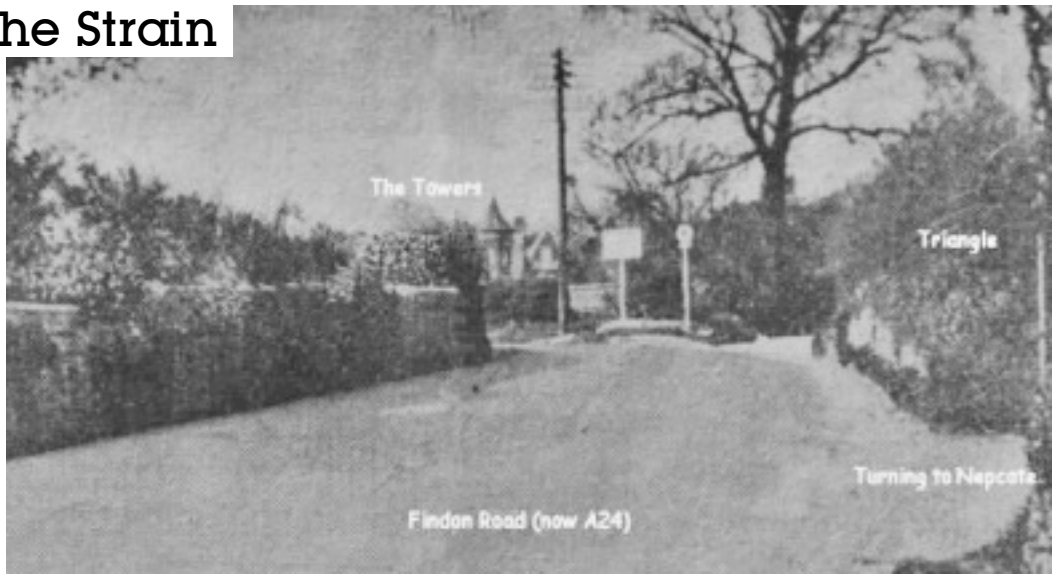


Photo from the 1920's showing the Triangle looking north on the A24. The property known as The Towers (in Cross Lane) is on the horizon.

In the centre flourished trees and sturdy holly bushes. This was an era when Findon had its own constabulary and the Triangle had long been used as a rendezvous for the local bobby, Bert Warder, and his superior. When Bert was on night duty it was at this appointed place that he met his sergeant (who I assume came from Worthing), to exchange notes and receive fresh instructions. Bert lived in the High Street and the arrangement was that they always met around midnight - Bert's police duties in the village permitting, of course.

CLIP CLOPS

Holiday Accommodation

In Findon Village

Lovely spacious self catering accommodation - sleeps two

Twin bedroom, Sitting room, Shower bathroom, lovely spacious sun lounge, Kitchen and garden.

Dogs welcome. Easy walk to local pub & shops or onto the downs.

Minimum stay 3 nights.

**Contact: Karen 07886650747
karmitage58@gmail.com**

RELIABLE WINDOWS

Friendly, Local, Well Established

WINDOW CLEANER

Contact Chris for a quote

07780 687522

chriswitten10@gmail.com

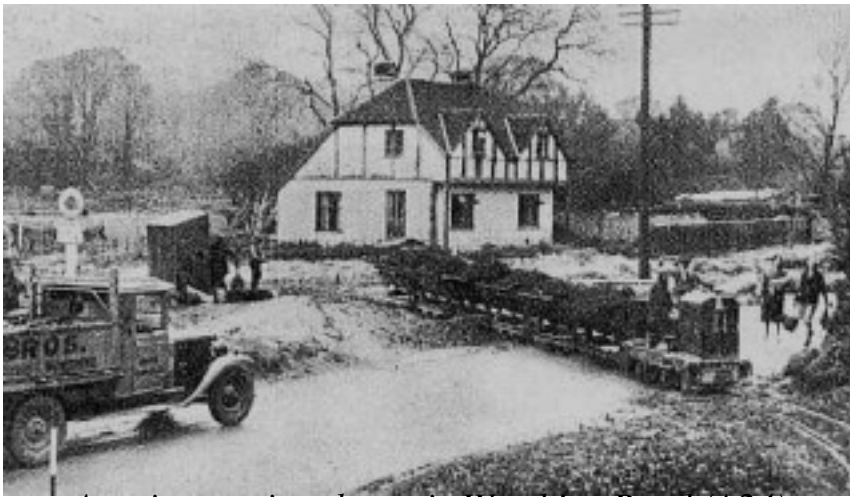
Window cleaning service offered Monthly, Bi-monthly or Quarterly

Soffits, Fascias, Guttering,

Conservatory Roofs

**** No Job Too Big or Small ****

Water Fed Pole System or Traditional Window Cleaning



*A train crossing the main Worthing Road (A24)
at The Triangle, Findon in 1931*

A small locomotive was utilised to haul the loaded wagons of excavated earth on small gauge rails across the main Worthing to Horsham road. The 1930's road traffic was often delayed, and had to give-way to the train. The train shunted and clattered and I am told that the spoil ended up in the Nepcote Green environs. The construction work continued as the lorries and cars patiently queued.

Eventually, the offending corner of the and train finally departed.

The landmark of the Triangle had finally disappeared completely and within a few years the major construction work on the new arterial road (the Findon bypass) started in 1936. I will give an insight into this in next month's edition.

Further snippets of Findon's history can be found on Valerie Martin's website - www.findonvillage.com - including the Conveyance Order dated 23rd November 1937 for the bypass work.



*Traffic pass the road improvements in progress at
the sharp corner of the Triangle in 1931.
The Towers in the background again.*

Peckhams Butchers

*Locally produced meat,
cut to your requirements.*

We receive a daily
delivery of Fresh
fruit and vegetables

We now provide a Friday
morning delivery service
for customers who find it
difficult to get to the shop

The Square, Findon

Tel: 01903 873202

Summer Fete

Saturday 18th June 2016

14.00hrs to 16.30hrs

Featuring: Live Family Entertainment,
Magician, Music,
Children's Fancy Dress Competition

The Theme is Superhero's and Princesses

Entries to meet on Pond Green at 13.30hrs to register.

Price £1 per entry,

then a procession along the High Street
to the Village Hall for judging.

The Cafe will be open
serving delicious home made cakes and scones,
A licensed bar serving wines and beer.
Ice Creams & a Pimms Tent in the gardens.

Come and join us
for a fun afternoon with the Family

Tom Langford Services

Plumbing, Heating,
Drainage, Gas Services
Free Estimates, 24 hour service
No Callout Charge
07836 479493

ALAN 'COBBY' BOURNE

Local builder offering competitive
friendly service
Including all Building
and Decorative work
For free estimates
Ring 872638 / 07879441804

PAWS ANIMAL SANCTUARY

Lots of cats, rabbits, guinea pigs
needing homes
Open Sundays 12-4pm
Come and meet the animals.
Admission £1.00 donation, kids free
15 The Oval, Findon Village
01903 872734
www.pawsanimalsanctuaryfindon.co.uk
Email: pawsanimals@hotmail.co.uk

R J Maslin Of Worthing

* Traditional French Polishing *
* Antique Preservation *
Modern & Antique Furniture
* Restoration & Repairs *
Tel: 01903 719879
Mobile: 07743528139

UNABLE TO TEND A LOVED ONE'S GRAVE

A service Tailored to your
Requirements and pockets,
we can do it for you.
Findon / Worthing area
For a leaflet, more information
or to arrange an appointment
Please call G. C. F. Services
Tel : 01903 873813 or 07785230913
email : gcfgraves@aol.com
website : www.gcfservices.com

ACTechUK.com

Making Technology Work For You

Help with all aspects of technology
for your home, mobile and business.

PC/Laptop fix, Network setup,
telephone, audio visual services
£20 call out with first fix and advice
No fix, no fee. Findon Valley based.
25 years experience.

Customer Service Like it Used To Be!
Please call Andy on 07515 948096
or email info@actechuk.com

Need a Handyman?

Then please call Steve on:
07855 846963

FREE estimates & reasonable rates
for ANY-SIZE job. AND there is no
call-out charge.

email: steve_winterberg@btconnect.com
South Lodge Cottage, Rogers Lane, Findon, West Sussex BN140RE

- Property maintenance
- Painting & decorating
- Wall papering, floor & wall tiling
- Flat pack assembly
- Shelving
- Plumbing
- Kitchen & Bathroom refits
- Curtain rails
- Coving
- Plastering repairs
- Bricklaying
- Studwork
- Insulation
- Loft hatches & ladders
- Laminate, plank & parquet flooring
- Skirting, architraves & dado rails

ninety nine
percent of
inspiration



**Invitation To
The First Meeting Of
Knitting And Crochet Guild
Findon Branch**

Join us for our first Local Meeting
of The Knitting And Crochet Guild UK

**To Be Held On The First Saturday
Of Each Month** £1.50 Per Meeting

At Nightingales Lounge,
Nightingales Housing,
Horsham Road Findon, BN14 OTW

**Starting On 7th May 2016
2.00pm - 4.00pm**

Contact Sue at sueoverthegardenqate@gmail.com
Or Jan on 01903 877091

All existing guild members and non members welcome

**Come Along For Some Yarn Therapy
Tea Or Coffee Available**

**Findon
After-School
Worship**

Tuesday 17 May,
3.40pm

All families are invited to
a short monthly, informal,
Worship Service at
Findon Church at
3.40pm,
every 3rd Tuesday
of the month,
including drink & snack.

All ages are welcome.
Hope to see you there.

Helena

Cissbury Picture Framing

25 years experience in framing
watercolours, drawings & photographs

small jobs welcome,
reglazing and mounting

artist exhibition mounts etc

also a portrait painter in oils



for framing, please call or email for appointment

07515 729326 / portraitpainterframer@gmail.com

– the Studio, Maytree Avenue, Findon Valley



St. John the Baptist Church, Findon ...

Everyone Welcome

Walking together in the Way of Christ
and sharing His love with others.

Sunday 1st May	8.00am 10.00am	Eucharist, Findon Church Family Service at Village Hall <i>+ breakfast from 9.15am</i>
Thurs 5th May	7.00pm	Ascension Eucharist, Findon Church
Sunday 8th May	9.30am	Sung Eucharist, Findon Church <i>+ Messy Sunday in the Den</i>
Sunday 15th May	8.00am 9.30am	Eucharist, Findon Church Family Communion, Findon Church
Sunday 22nd May	9.30am	Sung Eucharist <i>+ Messy Sunday in the</i>
Sunday 29th May	10.00am	Fifth Sunday Parish Eucharist at CLAPHAM CHURCH
Sunday 5th June	8.00am 10.00am	Eucharist, Findon Church Family Service at Village Hall <i>+ breakfast from 9.15am</i>

- ✳ Monday 9.00am & Tues-Friday 9.15am, Morning Prayer
- ✳ Tuesdays 10.00am, Holy Eucharist Service at Findon Church
- ✳ Wednesdays 10.30am-12.00pm Quiet Time at Findon Church
- ✳ 1st Sunday of month, 9.15am breakfast and 10.00am Family Service in Findon Village Hall
- ✳ 2nd & 4th Sundays, Messy Sunday in the Den for children aged 3+ during the 9.30am service. There is also a Children's Corner in Findon Church for quiet play with puzzles, books & colouring.
- ✳ 1st Tuesday of month during term time, 3.30-5.45pm, Messy Church in Findon Village Hall.
- ✳ NEW 3rd Tuesday of month during term time, 3.40pm, a short informal After-School Service, with drink/snack, at Findon Church.
- ✳ Last Tuesday of month, Light Lunch @ 1pm, Findon Village Hall. Soup & a pudding with friends for £4.00.
- ✳ First Monday of month, 7.30pm Ladies' Curry Night, Tajdar.

Priest-in-Charge; Rev. Helena Buqué, c/o The Rectory, School Hill, Findon
Tel: 873601, findon.rectory@btinternet.com

Village Hall May 2016

For all booking enquiries please
Email findonhallbooking@gmail.com

Weekly	Day	Time
Carpet Bowls	Monday	14:30
Cissbury Players	Wednesday	20:00 – 22:00
Lambstails (Term Time)	Thursday	10:00 – 12:00
Line Dancing	Wednesday	09:45
Danceaholics	Sunday	20:00
Yoga	Monday	10:30
Beginners Yoga	Monday	09:30

Fortnightly	Date	Time
Circle Dancing	Monday 9 th & 23 rd	19:10

Monthly	Date	Time
Art Class	-	09:00
Auction	Friday 6 th	18:00
	(goods 2–4pm, viewing 4–6pm, Auction 6 pm)	
Bead Magicians	Tuesday 17 th	09:00
Canasta Club	Last Tuesday	15:00
Downs WI	2 nd Tuesday	14:30
Family Church Service	1 st Sunday	09:30
Gardens Association	Last Friday	19:00
Light Lunch	Last Tuesday	13:00
Meditation	Tuesday 17 th	19:30
Messy Church	1 st Tuesday	15:30
Village WI	2 nd Thursday	19:30

Committee Room	Date	Time
Rummikub	2 nd & 4 th Wednesday	14:00
Village WI Darts	Mondays	14:00

Other Events	Date	Time
Coffee Morning	Sat 7 th May	10:00

~~~~~

The Village Hall website provides contact and booking details  
as well as listings of forthcoming events

**[www.findonvillagehall.com](http://www.findonvillagehall.com)**

# curtis and son

***Findon's longest established family owned independent estate agents and valuers with an excellent local reputation***

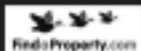


- Free valuations
- Local expertise
- Full colour particulars
- Accompanied viewings
- Competitive commission
- Free probate valuations
- Local and national advertising

**01903 264161**

**[www.curtisandson.co.uk](http://www.curtisandson.co.uk)**

156 Findon Road, Findon Valley, Worthing, West Sussex BN14 0EL



**'Findon's longest established family owned, independent estate agents and valuers'**