



Findon

October
2018

Community newsletter for
Findon, West Sussex
Including the Church Parish of
Findon, Clapham & Patching

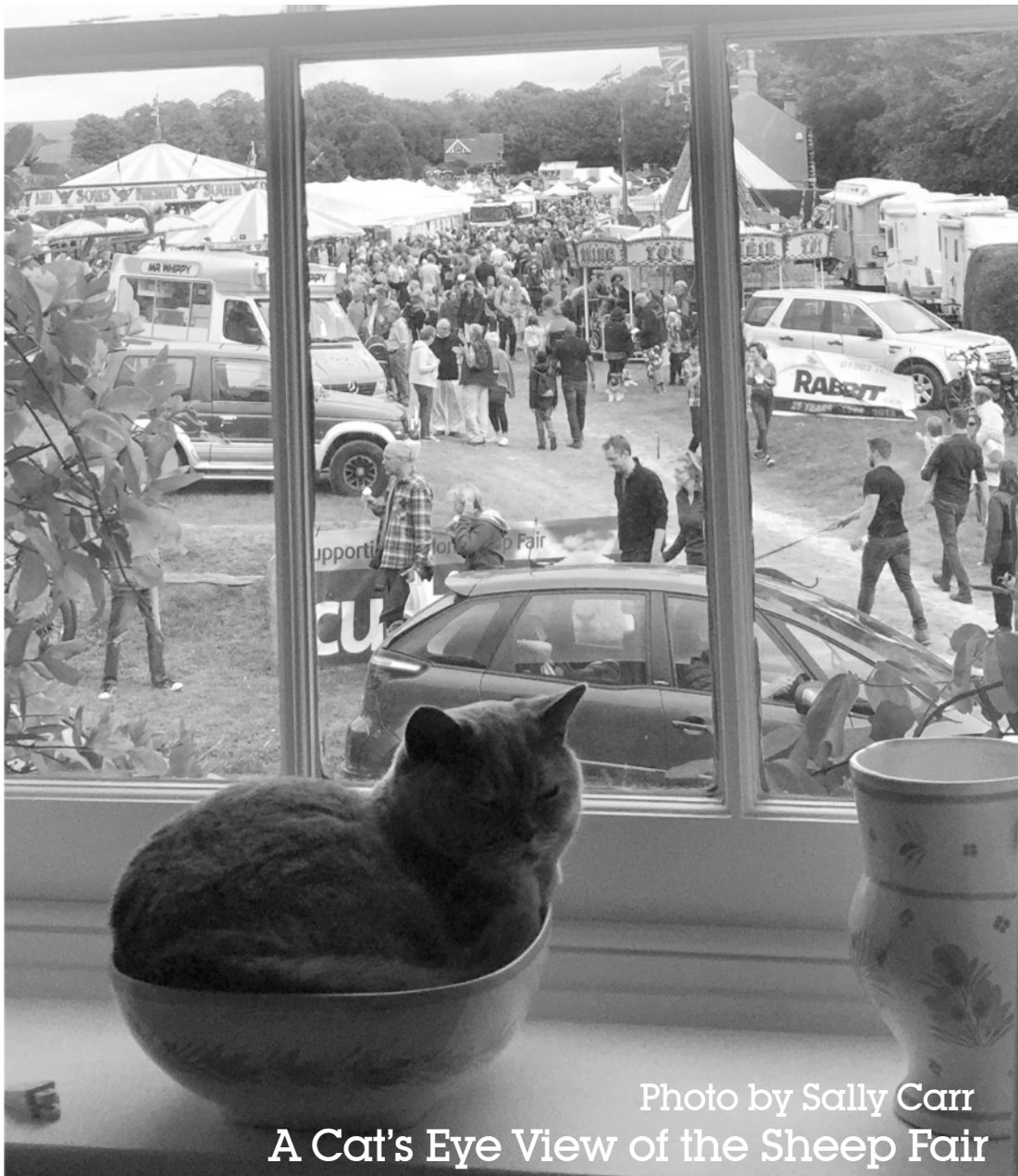
Editorial team led by
Nick Gore

News

*Findon News is published monthly and is available free of charge from various outlets throughout Findon and can be viewed on the Findon Community website - www.findonvillage.org
Findon News does not endorse any advertisements published. No responsibility will be taken for errors, omissions or any claims made by contributors. Opinions expressed are not those of the publisher.*

Articles for publication (**maximum 650 words**) can be submitted by email to findonnews@zoho.com, or via the 'Findon News Box' in the Village Shop.

Closing Date For Next Publication: 20th October 2018



Findon Sheep Fair 2018

Report &
Pictures
Page 10-11

Photo by Sally Carr
A Cat's Eye View of the Sheep Fair


From the Rectory

Well, today the weather is much more autumnal, after a balmy weekend, when we celebrated the Harvest at Findon Church, supported by the wonderful singing of the newly formed Monarch's Way Singers, surrounded by exquisite floral displays provided by some of our talented and dedicated flower arrangers. Look on the website for pictures! The produce transported behind a tractor from Cissbury Allotments was sold off after the Service and the proceeds donated to East Clayton Donkey Farm, whose work makes such a difference to the wellbeing and confidence of some of this area's young people who struggle with their mental health. I look forward to the celebration of Harvest this Sunday at Patching Church (after the magazine has gone to print!) and also the concert in Findon Church with the Bernardi Music Group.

Walking Scamp the other day, I was amazed by the indigo blue haze atop the hedge to my right on High Salvington. Drawing closer, I saw it was the abundance of sloes – I don't remember a year when I've seen as many, and they are unusually large too. Alongside, hedgerows are bright with scarlet rose hip and dusky red hawthorn, interspersed with juicy large blackberries. Gathering and munching as you walk is great! Autumn is a glorious time of year when the weather has been so warm and sunny – I wonder how colourful the leaves will be

in their turn? We have much to be thankful for!

On 7th October, we will have our first 'music-led' Worship Service at 10am in Findon Church, with this month's guest musicians, Becca Lieu and some of her pupils. Some if you will remember how they entertained us last year at the Christmas Tree Festival on the Sunday afternoon and it is a real joy to welcome them back to St John's. Do join us for this new-style experience of praise and prayer and be sent out uplifted and inspired! If you prefer something quieter, then our meditative time in St John's on the 2nd Monday each month (this month, October 8th) may be just what you are looking for! The church is open from 6pm for up to 45 minutes of quiet thought and prayer – a time to just rest in the beauty and peace of this ancient building, perhaps light a candle, or read quietly as soft music plays. In our frenetic lives, there is too little chance to just BE, we are always being channeled to produce or do more, so a small oasis of calm can be really health giving and energising.

Next month of course we will join in with the national celebration of the 100th Anniversary of Armistice Day, and Remembrance Sunday, November 11th, actually falls on a Sunday this year. 

Rev. Helena Buqué, Priest in Charge and Colin Cox, Curate:
c/o The Rectory, School Hill, Findon, BN14 0TR. Tel: 873601
findon.rectory@btinternet.com www.findon-clapham-patching-churches.com
FB: Findon Clapham Patching Churches

During the act of remembrance at the Findon War Memorial outside the church, we will also dedicate the silhouette of a serviceman, placed on Pond Green, Findon, giving thanks for all who have dedicated their lives to the service of others in our armed forces, and recognising with gratitude all who work for peace and justice in our troubled world. We all have a part to play in this task; what we are called to do depends on our individual gifts and vocation.

Talking of vocation, we have a Reader in training joining us in the Parish on placement for the next couple of months. I know you will make Hilary feel welcome!

Every blessing, Helena

Findon Couple Celebrate Platinum Anniversary



Congratulations to Peter & Eunice Rogers on celebrating their 70th Wedding Anniversary in September.

Findon Parish Council Report

The Findon Sheep Fair was a splendid success and the hard work put in by all involved creates a spectacle for all villagers as well as a real attraction for the public further afield, they deserve a huge thank you from us all.

As we move to autumn and see the horse chestnuts fall the Harvest Festival procession through the village lead by a scarecrow on a tractor was a welcome sight and the vegetables from the Cissbury allotments very impressive. The performance of the choir prior to the service at St John the Baptist demonstrated some real talent and was truly beautiful.

Findon Parish Council is seeking two

councillors for co-option. If you care about our village and want to contribute please contact me on 0783 4552984 or Fiona MacLeod, the Parish Clerk on 01903 877225 or email clerk@findonparishcouncil.gov.uk and let us tell you what we do. If you want to come along to a meeting please do, they are open to the public and give a flavour of how we operate, with openness and inclusivity, stimulating debate on the future of our village. Details can be found on the Parish Council web site <http://findonparishcouncil.gov.uk>

Cllr Sean Smith
Chairman
Findon Parish Council'

All the latest village news and events are on the website
www.findonvillage.org

Buying ■ Selling ■ Letting ■ Commercial ■ New Homes

Michael
Jones
& Company



Convent Gardens, Findon Village

An attractive extremely spacious detached family home, circa 2000. Superb open plan kitchen/dining/family room, three additional reception rooms, utility room.

Five first floor bedrooms, three with ensuite, additional family bathroom.

Private drive, double barn style garage, feature gardens.

Asking Price £925,000

Findon Office 01903 872949 208 Findon Road, Findon Valley BN14 0EJ www.michaeljones.co.uk

Offices in Worthing, Lancing, Goring, Findon, Broadwater and Rustington



Steve drops 42 stories for Charity

Findon resident Steve Stapleton recently abseiled down the i360 tower in Brighton.

At 450 feet (137m) the i360 viewing platform is the equivalent to 42 stories high!

On a sunny Saturday morning in September Steve joined 13 others for the fundraising descent. Steve hopes to raise £800 for Guild Care. "Being married to a Community Fund Raising Officer for Guild Care certainly has its ups and downs, and this definitely took me high up. Thankfully I got safely down", said a much relieved Steve after the event.

Keen to get to a golf match Steve was the first to go.

"I felt I had a responsibility to try and make it look easy and stay calm. With a big smile but legs like jelly I stepped over the edge and took in the stunning views of Brighton!



Five minutes later I was back on terra firma to the sound of whooping and applause.

An amazing adrenaline rush. Thank you to everyone who sponsored me."

Guild Care provides over 30 care and support services to people aged 5 -105 in the Worthing area. Their services aim to reduce loneliness and isolation, improve well-being, and specialist dementia care. Support is also given for children with learning disabilities and to their families.

These vital services are given to over 3,000 people each year in our local community and any donations help.

Sponsorship monies for Steve have to be in by 15th October so there is still time for further donations. Go to the Just Giving website - www.justgiving.com - and search for Steve Stapleton.



Local Freelance Hairstylist

Wig Stylist & Wig Supplier

Hair & Wig services provided in the comfort of your own home



Services: Colouring Services, Cut & Blow dry, Hair Up, Keratin treatments, Sets, Perms, Wig consultation/fitting and styling



All Colours are Organic, and Vegan friendly - Organic hair products used

Member of The Freelance Hair Association &

MyNewHair (charity for medical hair loss sufferers)

*Fully
Qualified*

Call Rita on 07881 863271

www.hairs2uworthing.co.uk

FB: Hairs 2u -Rita

*Fully
Insured*



Ashington Community Choir

*Singing for those who can't sing in tune
and also for those who can!*

Fun Choir – never sung in a choir before?

Come along and see what it's like.

All ages and genders welcome

We meet on the 1st & 3rd Tuesday
of the month between 7.30 - 9.30pm at

The Village Club

Mill Lane, Ashington, RH20 3BX £5

Free Refreshments per session paid in advance
or £7 pay as you go

For full details contact Di Clarke

diann.clarke@outlook.com

or 01903 893156



Teatime-Sussex



Afternoon Tea To Your Door

Your Vintage Tea Party Includes:

Tasty Sandwiches &

Scones with Jam and Cream &

Delicious Homemade Cakes

& & A Selection of Teas &

Pretty vintage china, cutlery,
cloths and decorations

Free local area delivery & collection

Telephone: 07717 949990

email: linda@teatime-sussex.co.uk

www.teatime-sussex.co.uk

S Baker Carpets

Sussex Based Company Specialising in:

Carpets, Vinyl, Karndean, Amtico,
Laminate & Wood flooring

*Check out our work in the
Findon Village Post Office*

Call Steve on 07966 573474

to book your free home consultation

Stephen.g.baker@sbaker-carpets.co.uk

AcTechUK.com

Making Technology Work For You

Help with all aspects of technology for
your home, mobile and business.

PC/Laptop fix, Network setup,
telephone, audio visual services

£30 call out with first fix and advice

No fix, no fee. Findon Valley based. 25
years experience.

Customer Service Like it Used To Be!

Please call Andy:

01903 930850 or 07515 948096

Email: info@actechuk.com



Messy Church

The next Messy Church is

2nd October at 3.30pm

All children and their grown ups welcome.

For more information please ring

The Rectory on 873601

Findon Village Shop - Update

October is a big month for the shop, it will be one whole year since the store opened on 28th and we have gone from strength to strength since. To mark the occasion there will be birthday cake served on the Sunday morning so please pop in for a slice and help us celebrate this shared achievement. All our shareholders and customers can feel a real sense of pride in what we are part of, we couldn't do it without you.

The shop stall at the sheep fair, selling a range of refreshments such as free range sausage rolls, our ever popular Danish pastries and hot and cold drinks, was a great success. Special thanks must go to Terry and Margaret Bamford and Annie and Simon Witchurch for their help throughout the day.

The coffee machine was worked hard

and we received lots of compliments about the quality of the coffee and the reasonable price. The machine is normally housed in the back section of the shop and makes various types of delicious coffees and hot chocolate for anyone wanting to grab a hot drink on the go.

Halloween falls on a Wednesday this year. The shop will be entering into the spirit with decorations and a cauldron of sweets for any little trick or treaters who call in between 4pm and 7pm.

May I take this opportunity to ask anyone using newspaper vouchers to let us have them before the start date on the vouchers, so they can be added to the billing system. Paying with vouchers in arrears may not be possible.

Angus Charlton



FINDON VILLAGE STORE

Post Office & Newsagency

Tel:

01903 877110

Groceries; Bread; Cakes; Freshly made Sandwiches;
Beers, Wine & Spirits; Tobacco; Cards

Run by the Community for the Community

Shop Opening Hours:

Mon to Sat 07:00 - 19:00

Sunday 07:00 - 12:00

Post Office Opening Hours:

Mon to Fri 08:30 - 17:30

Sat / Sun 08:30 - 12:30 / 12.00

Horsham Road
Findon
BN14 0TF

www.findonvillagestore.org

findonvillageshop@gmail.com

ALAN 'COBBY' BOURNE

Local builder offering competitive friendly service
Including all Building and Decorative work
For free estimates

Ring 872638 / 07879441804

RELIABLE WINDOWS

Friendly, Local, Well Established

WINDOW CLEANER

Contact Chris for a quote

07780 687522

chriswitten10@gmail.com

Window cleaning service offered
Monthly, Bi-monthly or Quarterly
Soffits, Fascias, Guttering,
Conservatory Roofs

** No Job Too Big or Small **

Water Fed Pole System or
Traditional Window Cleaning

Clean Cut Gardening Services

- Mowing
- Hedge cutting
- Tree surgery
- Turf laying
- Shingle & bark laying
- Weed killing
- Power washing patios & drives
- Gutter clearance
- Rubbish & house clearance

Friendly, reliable & fully insured

01903 899592

www.cleancutgardening.co.uk
lukebrice@cleancutgardening.co.uk



For all your home water needs, speak to the professionals - UKh²o

Water softeners

installation, servicing and salt

Filtered drinking water systems

and boiling water taps

Kitchen and bathroom design

plus installation

Heating and plumbing services



01903 500 551 | www.ukh2o.com
50 Ferring St, Ferring, West Sussex BN12 5JP

 Kinetic[®]
home water systems

Equestrian GB Team Wins Gold

During September Findon equestrian rider Tina Cook took part in the World Equestrian Games in America.

Overall more than 800 horses from more than 70 countries took part in the 13 day, eight discipline event. Transporting the horses to the small town (pop. <2k) of Tryon, North Carolina USA, was billed as the biggest commercial airlift of horses ever.

With near proximity to hurricane Florence the weather proved to be disruptive and extremely challenging, but the overall result was a triumph for the GB team winning gold.

In the individual events Tina was placed 9th (out of 82 competitors).

A brilliant result for all concerned and automatically qualifies the GB Team for 2020 Olympics in Tokyo.

Congratulations Tina.

SHEEP LOCKERERS

The Nepcote Flock are looking for two new helpers.

One day per week, and to also cover holidays

No experience necessary but an interest in sheep needed.

Must be able to drive.

Please e-mail Fishponds185@tiscali.co.uk

Graham Langford



Crime Report

No Crimes Reported In the area During The Past Month

Scam Through Your Letter Box

Typically, scam mail involves professional fraudsters sending convincing letters that are designed to trick people out of money or other valuables. Scam mail can include bogus competitions and fake prize draws. This mail mostly originates from overseas and is hard to detect. Royal Mail is committed to doing all it can to protect its customers from scam mail and in 2016 introduced a series of additional measures to reduce the impact. Royal Mail has proactively stopped over 4 million suspected pieces of scam mail at its distribution centres around the UK before they can be posted through the letter boxes of customers

What to look out for: Is someone you know receiving large amounts of mail? Are they sending money in response to this mail? If so, they could be a target.

Contact: Royal Mail scam mail team on 0800 0113 466 or email scamsnail@royalmail.com. Post to : FREEPOST SCAM MAIL

Findon Sheep Fair

We have many thank yous to make; the largest being a huge thank you to all of the volunteers who help us, without whom the Show would not happen. This year we had more help than ever which made everyone's lives a lot less stressed. The second thanks must go to the weather, although it was grey and overcast it chose not to deluge us in rain, unlike the last 2 years. It was very kind to us for the days preparing the show and for the day itself. In terms of attendees we estimate this year's show to be our best ever - approximately 7000.

Whilst the Sheep Fair is not the size it was in the days when upward of 2000 sheep were commercially auctioned and the green being virtually covered in wooden hurdles, it now exists to maintain a 200 year old link with tradition. Our rare breed sheep show at the top of the green is a recognised event on the UK's Rare Breed calendar. This year forty farms entered sheep and there were 23 different breeds were on show. The judging events went very smoothly and the Supreme Champion of the show was a sheep from the Cotswold Breed owned by Fiona Laidlaw from Guildford in Surrey. Fiona was very pleased that we reminded her to enter again this year !

This year we had two new competitions: The first, in memory of Janice Oakes who had been the sheep fair treasurer for many years, her husband Jeremy, presented a trophy to "The Best Farm at the Show" for winning the most points in all competitions. This was won by Viv Miles who comes from Kent.

Secondly the Community Shop sponsored the "Best dressed Young Handler in each age group" and, in addition to a small prize for each of the three winners, a packet of sweets were given to each child who entered.

We had many stalls around the sides of the arena and for the first time we had a cow and calf brought to the show by Robert and Emma Gale of Gallops farm. It is very good to be able to show off the best in the countryside to the many people visiting the show from the towns and villages in the area, and from further afield, including Germany and London.

Further down the field there were 141 stalls, both in the marquee and on the main field. Amongst them were the Friends of St John the Baptist Church who operated the refreshment stall at the end of the Marquee, with proceeds going to the support of the Church. Another stall, Vintage Switch, raised money in aid of the Findon Village Christmas lights.

Among the staple offerings of Stuart Barnes Sheep Show and duck herding and a Falcon & Raptor Display, we also had Sompting Morris performing, both within the main arena and impromptu in the food area. A Children's Circus were giving youngsters acrobatics instruction on the lower part of the green. Classic and Vintage vehicles were on show on the North Verge. Along with the sheep at the top of the Nepcote Green the Harris's traditional funfair maintained the link with the history and tradition of the Sheep Fair.



The Sheep Fair always tries to support local concerns and worthy causes with surplus income we make. In addition to the Findon Valley 1st Scout troop, who do a marvellous job of managing the car parking (and who share the proceeds of the car park takings), we aim to contribute to PAWS, the local animal sanctuary. Other worthy causes and projects will be announced once the final account for this year's show has been drawn up.

Again, our thanks go to the many people who support the show: to our many volunteers, to the land owners who generously loan their fields as car parks, to the local businesses who support and sponsor the show, to the local residents, to the many stall holders who make the show what it is and finally, to the



many people who attend every year. You are supporting this worthy Village tradition as well as helping local causes, your attendance also made the 100's of hours of the Committee's blood, sweat and tears worthwhile.

THANK YOU.
Sheep Fair Committee

Photos courtesy of Rosie Mortimer



JOSHUA THE GARDENER

Professional Organic Gardener
As seen on TV with Monty Don

Garden design and creative maintenance
RHS trained and qualified

07780332452

joshuathegardener@gmail.com
www.joshuathegardener.co.uk



MONARCHS WAY Wellbeing Clinic

36 Cross Lane, Findon Village

**Sports & Therapeutic Massage therapies for
general aches and pains, arthritis, sports,
recreational and occupational injuries, stress and
stress related conditions and general wellbeing.**

By appointment only – please call 07841 636727
www.monarchswayclinic.co.uk

Peckhams Butchers

*Locally produced meat,
cut to your requirements.*

Daily deliveries of
fresh fruit & vegetables.

We also provide a Friday
morning delivery service
for customers who find it
difficult to get to the shop

The Square, Findon
Tel: 01903 873202

HOLIDAY ACCOMMODATION

“Little Longmead” Findon Village
Sleeps 4 - Self Catering

1 Double King Size, 1 Twin room, Bathroom
Kitchen, Lounge Dining, Lovely Views

Own Enclosed Garden & Patio with
Garden Furniture and Barbecue

One Well Behaved Dog Welcome

Minimum Stay 2 Nights

Contact Ann: Tel - 07802507976
Email - pamamm@talk21.com

Vintage Switch

The Christmas Lights Committee would like to thank all those villagers who contributed so generously to our 'Vintage Switch' fundraising stall at the 2018 Sheep Fair. The wide variety of donated items included a sumptuous fur coat and matching hat from the 1920s, handmade wooden toys from the 1950s and brass shellcases from the First and Second World Wars. The enticing display attracted a lot of attention on the day and the stall was consistently busy.

Nearly all of the items were sold and we will be attending a boot sale in the near future to showcase the remaining stock. We also had a number of very unexpected and generous cash donations. We are delighted to have already raised an astounding total of £650, all of which will be reinvested to maintain and extend the lights display for this Christmas and onwards.

Please look out for our next event - the bumper Christmas raffle, which will again feature a well stuffed hamper of Christmas goodies along with exciting runner-up prizes.

Corrine Ball and Jan Mackerell



Additional Pictures From The Sheep Fair

courtesy of Rosie Mortimer

CENTRAL AVENUE £685,000



An impressive, delightfully located four bedroom spacious Detached Family Bungalow with feature south facing rear garden.

NEPCOTE LANE £449,950



A most appealing extended Detached Bungalow with feature rear garden, located a stone's throw from picturesque Nepcote Green .

THE CHASE £419,950



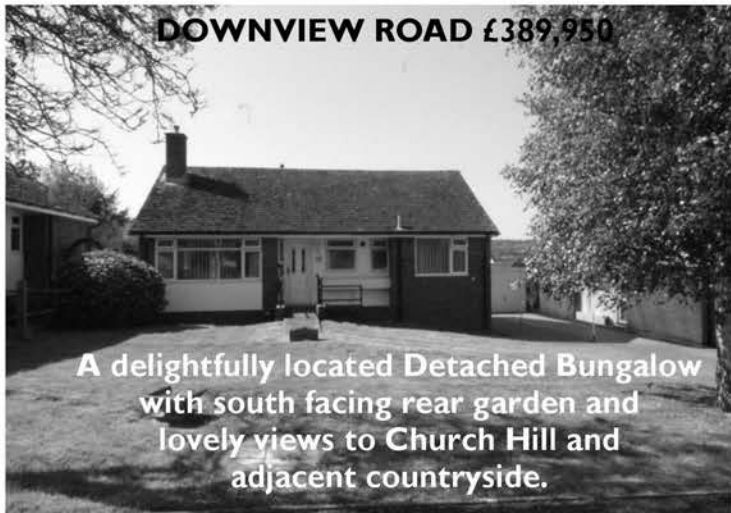
Spacious two bedroom Detached Bungalow with lovely outlook to Church Hill .

BEECH ROAD OIEO £409,950



Attractive Detached Bungalow situated close to the centre of the Village with west facing rear garden.

DOWNVIEW ROAD £389,950



A delightfully located Detached Bungalow with south facing rear garden and lovely views to Church Hill and adjacent countryside.

SOUTHVIEW ROAD £389,950



Attractive three bedroom cottage-style House in the heart of the Village.

Harvest Festival Procession.

£210 was made from donations of the vegetables and fruit and this will go to the East Clayton Donkey farm charity.

Graham Langford



Bell ringing afternoon tea
& coffee morning

Saturday 6th October

3 – 5pm

Saturday 3rd November

10 – 12 noon

Come along, enjoy listening, ask questions, have a go for a donation and enjoy the hospitality.

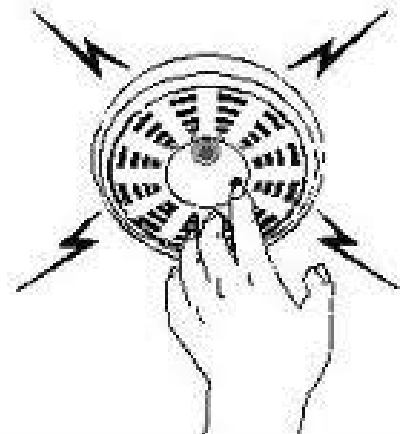
Enjoy home-made eats and treats!

There will be a raffle at each event.

We are fund raising to help pay for the work that needs to be done to keep the bells ringing into the future.

200 Club
The September winner of
£25 was **Number 135**
J Greeney

**TEST YOUR
ALARM MONTHLY**



Village House Hotel
The Square
Findon Village
BN14 0TE

Village House

Tuesday Nights: **Pizza & Pasta**

£5 off a bottle of Italian Wine when two dine

Christmas Party Bookings

Now Being Taken

Pop into the pub for details

Great Roasts Every Sunday

Great Food ~ Great Beer ~ Great Place to be.....anytime

Watch Out

For All Forthcoming Events

01903 873350

facebook @Findonvillagehouse

www.villagehousefindon.co.uk

Robin wins silver for England!

Robin Carr - Findon resident, Findon Parish Councillor, and former Findon Parish Council Chairman - is a keen Hockey player and now into his 50th season playing at Worthing Hockey Club.

Robin is also a member of the over 75's England team. At the recent Grand Masters World Cup tournament in Barcelona the England team came away with a silver medal. The silver now adds to Robin's Gold achieved at last years Grand Masters European championship (as reported in Findon News last October).

Robin's success this year caught the eye of the Worthing Herald, and Robin was featured in the 9th August 2018 edition.

Robin has played Hockey since his school days and joined Worthing Hockey Club in 1968 following his move to the area. Since then Robin has held most positions at the Club including President, Club Captain, and Treasurer. He has served on the Management Committee for around 25 years.

Robin talks about the Worthing Club as very enterprising; the club running a number of teams - six mens, three ladies, and two juniors - and says that the club is always looking for new members.

The club is moving from its Headquarters in Broadwater where it has been since 1927. Plans are in place to build a new clubhouse at Angmering School alongside the existing Astro pitch. Robin says, "The combined excellent facilities will rival any other Sussex hockey club. Fund raising is in full swing and the new Clubhouse should be up and running by Christmas".

Perhaps more budding medal winning hockeys stars will be in the making at Worthing?

Congratulations to Robin, and good luck to Worthing Hockey Club in their new premises.

Further details on Worthing Hockey Club can be found on the Club's website - www.worthinghockey.co.uk

Youth Club

Every Thursday - During school term time
5.00pm till 6.30pm

Different themes every week
Ages 12+

At The Rectory, School Hill, Findon

Light Lunch @1pm

Tuesday 30th October
Findon Village Hall.
£5.

Everyone welcome.



Unit 28
 Guildbourne Centre
 Worthing
 (opposite Wilkinsons)

**Beautiful, Affordable Jewellery & Gifts
 For Men & Women**

Sterling Silver, Gemstones, Glass & Pearls
 Gents' Stainless Steel Range
 Interesting & Unusual Giftware
 Greetings Cards & Gift Accessories

Tel: 01903 218994
www.sewsilver.co.uk

KJ ROBERTS

**Property Maintenance
 and Electrical services**

Friendly locally based tradesman.
 Interior/exterior decorating, tiling,
 flooring, bathrooms, kitchens,
 decking, patios, fencing
 and any odd jobs.

All Electrical work undertaken.
 No job too small, Free estimates.

Tel Findon 873913
mobile 07947233424
Email jankevrob@aol.com

**UNABLE TO TEND
 A LOVED ONE'S GRAVE**

A service Tailored to your
 Requirements and pockets,
 we can do it for you.

Findon / Worthing area

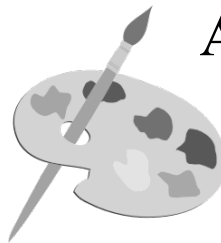
For a leaflet, more information
 or to arrange an appointment

Please call G. C. F. Services

Tel : 01903 873813 or 07785230913

email : gcfgraves@aol.com

website : www.gcfservices.com



Art Classes For All

Providing a bespoke service
 for all abilities.

- Practice drawing skills
- Explore different Media

Small social workshops in a home studio

Above all lots of fun, coffee and cakes!

Please contact Anthea:
antheablackmore1@gmail.com
01903 882226 / 07817 565472

Pure



Chocolate Truffles

Locally produced chocolate truffles
 without any colourings, additives or
 preservatives.

Free delivery to
 Findon village



www.purechocolatetruffles.co.uk or contact Kim on 01903 873829

Cinnamon Trust

Christmas Cards and Wrapping Paper will be available for sale from 7th October 2018 at my house, 13 The Willows. (Under the arch, turn right and it is house with white fence). A small supply will be available in my porch at all times but call me on 01903 874173/07544 572702 if you prefer.

Also orders will be taken from that date for my small Christmas Cakes at £5 each.

All these and lots more will be available at our Christmas Fair/Coffee Morning on 1st December 2018, from 10am in Findon Parish Church.

Maggie Martin

Findon Planning Applications

Planning applications for Findon are under the authority of South Downs National Park and listed on the SDNPA website (www.southdowns.gov.uk).

Findon Parish Council (FPC)

Planning Committee meetings are scheduled monthly to consult on planning applications received from the South Downs National Park Authority (SDNPA). Parish Consultation Letters (PCL) received from the SDNPA are displayed on the Notice Boards outside the newsagents and the Village Hall, and published on the FPC website (<http://findon.arun.gov.uk>) along with the schedule of Committee meeting dates. Please note that due to Findon News publication deadlines, some applications may have already been placed before the Committee.

Residents should check the Notice Boards and FPC website regularly to view notices and meeting details.

Any enquiries should be address to the FPC Clerk - 01903 877225.

Since the last issue of Findon News, the following Planning Applications have been posted on the SDNPA website:

Erection of a 2 bedroom chalet bungalow with associated parking and landscape.

Land adjacent to 47 Homewood Findon BN14 0XA

Ref. No: SDNP/18/04375/FUL

Proposed demolition of existing single storey outhouse together with link and construction of new two storey extension to the rear of the property.

Keepers Cottage Horsham Road Findon BN14 0RQ

Ref. No: SDNP/18/04680/PRE

Non Material Amendment to SDNP/18/03006/HOUS - External window and door frames changed to uPVC from aluminium, two pane bifold doors changed to three pane with pass leaf, openings in rear elevation increased to 2.4m from 2.25m, lead capping to parapet changed to powder coated aluminium and reconstituted stone lintels changed to brick soldier course.

High Mead Paddock Way Findon BN14 0TX Ref. No:

SDNP/18/04547/NMA



CARPET FITTING

**We Will Fit
Your Own Carpets**

Re-stretching - Repairs - Cleaning
Supply underlay - Hardboard - Screeding

We supply all makes of carpets and vinyls

Call Les Sheeran on:

Tel: 01903 872 077

Mob: 07966 212 358

www.carpetsandvinylsdirect.co.uk

Over
30 yrs
trading

F Silverthorne

Fishmongers

Quality Fish Est. 1907

145 Montague St, Worthing

Deliveries to Findon

(Thursday & Friday Mornings)

Tel. 01903 200854

Call by 9:30am on the day,
or the day before your delivery

ALLCLEAR GARDEN SERVICES

** Lawn Mowing **

** Hedge Cutting **

** Garden Tidy's **

CONTACT: Wayne Hardie

TEL:- 07733105548

email: whardie09@btinternet.com

Tom Langford Services

Plumbing, Heating,
Drainage, Gas Services

Free Estimates

24 hour service

No Callout Charge

07836 479493

JULIE JORDAN

**Professional Curtain Maker
and Interior Design**

Phone for free estimates

01903 263823 / 07801687155

Juliejordan100@yahoo.co.uk

THE ARUNDEL FINE GLASS STUDIO

Jacques Ruijterman

**Glass engraving for
presentation and gifts**

Retail of modern and classical
style glass by contemporary
artists and major glass houses

**The Old Stable, Tarrant
Square, Arundel**

Tel 01903 883597

or at home Tel 01903 871469

www.arundelglass.com

CLIP CLOPS

Holiday Accommodation

In Findon Village

***Lovely spacious self catering
accommodation - sleeps two***

Twin bedroom, Sitting room, Shower
bathroom, lovely spacious sun
lounge, Kitchen and garden.

Dogs welcome. Easy walk to local
pub & shops or onto the downs.

Minimum stay 3 nights.

Contact: Karen 07886650747

karmitage58@gmail.com

Premises Officer for St John the Baptist CE Primary School

Taking Care of Our School

When I was at school the caretaker was (what seemed to us), quite an elderly gentleman who spent his life pushing a broom around the place and generally clearing up after a bunch of happy but untidy children. Our caretaker was called Mr. Dartnell and busy as we kept him he always seemed to have time to stop and take care of the extra things that needed doing around the place.

Nowadays schools still have a Mr. Dartnell but the job title and the role have changed, although not necessarily the qualities of the person much sought after and valued to do the job. The rewards are more than just money; for the right person they extend to becoming a part of the life of the school and as important a member of staff as the teachers and other support staff who all contribute to the education of our primary school pupils.

The school's premises officer probably won't push a broom around as much anymore but he/she will be a rounded individual with a variety of skills which when brought to bear will help keep the school well maintained. The hours are short and flexible (12 hours a week), and the role would suit someone looking for a part-time job, perhaps an older but able person, gifted with DIY skills, who no longer wants to work long hours far from home and would appreciate a community orientated role in our village school.

If you would like to be our 'Mr Dartnell' please call in to school or telephone the school on

01903 873072 and we'll give you some more details.

John Roche

Chair of Governors

Shoebboxes for Love in a Box



gone to Moldova, the poorest European country).

Once again we will be filling shoeboxes with small gifts which are taken to children in hospitals, orphans and schools in Eastern Europe (for the last few years they have

These children have very little and will even treasure the shoebox itself. Why not start filling your box now!!

Suggested fillers are - a hat, scarf, gloves, soap, flannel, toothpaste & toothbrush, writing materials, cuddly toys, a small ball and writing materials and implements, etc.

More information and suggestions to fill the boxes can be obtained from Hilary on 872324.

Hilary Langford

Dog friendly Holiday Home in Findon

The Haven @ Findon is a modern 2 bedroom bungalow in Findon village that sleeps up to 4 people and is ideally situated for family and friends (and their dogs) visiting relatives, attending weddings, parties or just wanting a weekend break or holiday. It is available on a self-catering basis from a minimum 3 night stay. We are rated 'Excellent' on Trip Advisor and AirBNB.

You can visit our website -www.thehavenfindon.uk or for more details or enquiries phone Steve on 07590533892

Findon Accountancy

Chartered Certified Accountants
Findon based, reasonable rates
Full range of business & personal accounting
and taxation services available

Ken Elliott FCCA, FCIS

Telephone 01903 872589

Email: kenelliott@findonaccountancy.co.uk

Web: www.findonaccountancy.co.uk

R J Maslin Of Worthing

- * Traditional French Polishing *
 - * Antique Preservation *
 - Modern & Antique Furniture
 - * Restoration & Repairs *
- Tel: 01903 719879
Mobile: 07743528139

FINDON SMALL WORKS BUILDING COMPANY

FLINTWORK SPECIALIST, BRICKWORK,
RE-POINTING, PAVING & PATIOS,
EXTENSIONS, LANDSCAPING, FENCING.

CALL PAUL

07939 210354 or 01903 872147

Bob Hendy Electrician

Installation / Re-Wiring
Appliance repairs,
Security Lighting
24 Hour service
01903 877204
07850771246

Astracolour Photographic and Picture Framing

(Eric Beadel L.M.P.A & Edward Beadel - Partner)

www.astracolour.co.uk

We specialise in Wedding photography and picture framing.

A full portfolio is available to view.

Tel: for an appointment day or evening.

Copying and restoration of your old photo's
and instant passport photographs (4 for £8.00)

35 The Quadrangle, Findon Village Tel: 01903 877677

Paws Animal Sanctuary

When stray cats are taken to the Vets if they are not microchipped it is a real problem. If they are not claimed in the newspaper or lost and found on Facebook, the Vets ring around the local rescues asking if we can take in a stray cat . Recently every rescue centre is full to bursting. We take in so many strays all our cat pens are always full. We are open to the public every Sunday 12 until 4pm and have lots of visitors coming in to adopt cats. Because they are mainly strays we don't have any details of their ages, or if they get on with dogs, other cats, or children. Some are so upset they won't eat for days. So many have skin problems caused by fleas. We are always at the Vets. With this year's hot weather we have had a real crisis with fleas. We were using spot-on drops from the Vets on all the cats and dogs, and using flea spray in all the pens, but as soon as a new cat arrived with fleas we would have them back again. If strays come in from a Vet we ask them to treat the cat before we pick them up. But if the cats come in from members of the public they are usually full of fleas. Every day we groom all the cats and this year even the rabbits have had fleas. You cannot keep using the spot-on treatment or you would overdose the animal. We decided to buy expensive Seresto collars that

last for eight months to try and solve the flea problem, and bought lots of the electric flea traps that have sticky pads and a bulb. They work so well, we also use them as night lights and leave them on all day so also catch any flies and mosquitoes. Red mites can also be a real problem in the hot weather if you keep chickens. We treat our hen house and nest boxes every single week. We have had the usual stream of baby birds bought in (nearly always pigeons). And lost dogs. This week I was bitten trying to put the scanner over a dog to try to get the microchip number, it did hurt!

Stacey.

Paws Animal Sanctuary Findon
15 The Oval, Findon Village, West
Sussex, BN14 0TN
01903 872 734 / 0790 447 6819
We never use an ansaphone so keep
trying someone is always around
7days a week.
email: pawsanimals@hotmail.co.uk
www.pawsanimalsanctuaryfindon.co.uk
Registered Charity 1096231
Retired, fit Volunteers always welcome.

Ladies Coffee Mornings

**Every Tuesday
10.30am
@ Julia's Kitchen
Everyone welcome**

Curry Nights

The next Curry Nights at
The Tajdar Restaurant
Ladies - Monday 1 Oct @ 7pm
Men - Thursday 25 @ 7.30pm
All welcome

— THE —
MELLOR PRACTICE

INDEPENDENT FINANCIAL ADVISERS

**Is your answer 'YES' to any of these questions?
Then we can help you!**

- Confused by the array of pensions options?
 - Need to invest an inheritance or pension lump sum?
- Worried about long term care funding?
 - Fed up with your cash ISA return?
 - Ethical investment a concern?

— ● ● ● —
We are a team of fully qualified advisers, who can provide you with independent financial advice. Established locally since 1984, we pride ourselves on our friendly, professional service.

NOW OPEN AT
31 Chapel Road | Worthing | West Sussex | BN11 1EG

Call us on **01903 882007**

Visit our website **www.themellorpractice.co.uk**

Drop in to **our Worthing office**

Or call and make an appointment to see us at **our Arundel office**

Your first 45 minute consultation is at our expense

The Mellor Practice Ltd is an appointed representative of Lighthouse Advisory Services Limited, which is authorised and regulated by the Financial Conduct Authority.
The Mellor Practice Ltd, Registered in England, No. 10567558
Registered Office: 41b Beach Road, Littlehampton, West Sussex, BN17 5JA
The value of your investments can go down as well as up, so you could get less back than you invested.



New! New! New!

Informal and uplifting,
music lead service.

Sunday 7th October.

10am,

at St John the Baptist Church,
Findon.



Becca Lieu, Local musician
and tutor. Come and join us
for a very special service with
Rebecca, her pupils and
friends.

EVERYONE WELCOME!

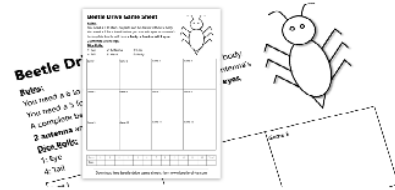


THE FRIENDS
OF CLAPHAM AND
PATCHING CHURCHES

You are invited to
a fun event
suitable for all ages a

Beetle Drive
with

Afternoon tea



Sunday 28th October 2018, 2.30pm
at Clapham and Patching Village Hall

Tickets available from Gail 871669 or Kath 871147

£6 Adults, £5 Members £2 Children tbc

Don't know what it is? Come and find out!



your
community
vet



Crossways
VETERINARY GROUP

Expertly caring for dogs, cats and other domestic pets in West Sussex for over 35 years!



Puppy & Kitten Clinics



Microchipping & Pet Passports



Orthopaedic, Spinal, Soft-tissue &
Reconstructive Surgery



Laparoscopic (key-hole) Surgery
& Advanced Laser Therapy



NEW Extended Vet
Consulting Hours

We've increased our weekday
consulting hours, ensuring our
clients have greater access to the
vets at the most convenient times.



**Introducing Pet
Health Plans**

Simple, affordable & money-saving
A proactive, preventive approach
to your pet's healthcare. Please
visit our website for more info.

43 School Hill
Storrington
01903 743040

179 Findon Road
Findon Valley, Worthing
01903 877325

2 High Street
Steyning
01903 816428

www.crosswaysvets.co.uk



DOMESTIC HEATING & ELECTRICAL SERVICES LTD

We offer a wide number of services:

Gas boiler installations, servicing and repairs; Gas fire servicing & repairs; Gas hob repairs & replacements, Gas certificates; Landlord certificates; Electrical Installations - including fuse boards, heating, lighting and fault finding.

Anything from the smallest of dripping taps.

Friendly free advice on energy efficient products and updates.



01903 872828

enquiries@domesticheatingservices.co.uk

www.domesticheatingservices.co.uk

1-2 Findon Forge, Nepcote Lane,
Findon Village BN14 0SE



THE MALAYSIAN TEA COMPANY

FINDON BASED & SELLING SINGLE
ESTATE PREMIUM QUALITY TEAS



Tea Bags: These double-chamber black-tea bags use the finest Orange Pekoe tea leaves

Also available as Earl Grey and in other Fruit flavours.

Loose Leaf Black Tea: Available in both Orange Pekoe & BOPF (Broken O P Fannings)



**GROWN IN THE CAMERON HIGHLANDS SINCE 1933
AVAILABLE NOW AT FINDON POST OFFICE**

CAMERON VALLEY MALAYSIAN TEAS ONE KUALA LUMPUR OR TWO?

Findon Downs WI

Speaker Maria Green - Feng Shui

Maria from Brighton gave us a very interesting talk on how she uses her experiences of traditional Feng Shui to help clients with private homes and business properties to redress imbalance and problems and to maximise their potential. She is also Chief Examiner of The Chue Foundation which is a research association set up by Master Chan Kum Wah from Hong Kong now residing in Edinburgh to study Feng Shui. Maria recently returned from Dublin in Ireland with him to help Costa Coffee to redress balances within their business and make a happy environment for their staff to work in.

Maria gave us advice on how to achieve better health, sleeping and wealth opportunities in our homes through using certain calming colours and positioning of mirrors.

Next Meeting Tuesday 9th October at 2.30

Making Christmas Cards

Exhibition A favourite scarf

Raffle-Sales Table and Refreshments

A warm welcome to everyone

Findon Village WI

Clare Bradford, a Worthing based life coach and celebrant, was our speaker at our September meeting. Clare's talk titled 'Keep motivated in Retirement', advised us of the importance of embracing any opportunities life offers and building friendships. Clare soon discovered that a lot of our ladies are already highly motivated and a lively debate followed.

Sassy won the competition with a poem about the Weary Walkers.

The Weary Walkers enjoyed a lovely scenic walk around Amberly led by Sharon and, by time this is published, Maggie will have showed us the delights of the vineyards and mills of West Chiltington

A big thank you to everyone who baked cakes, made preserves, made sheep bags and helped to man our stall at the Sheep Fair – we had a very enjoyable and profitable day.

Our next meeting is on Thursday 11th October – Take six cooks. Six of our members will be demonstrating tasty dishes for us to taste

Visit our website – <https://findonvillagewi.wixsite.com/mysite> or find us on Facebook -Findon Village WI for the latest information of our various groups or email findonvillagewi@hotmail.co.uk

All visitors welcome – we look forward to seeing you .

Paddy Winter

Findon Village WI President

curtis and son

Findon's longest established family owned independent estate agents and valuers with an excellent local reputation



- Free valuations
- Local expertise
- Full colour particulars
- Accompanied viewings

- Competitive commission
- Free probate valuations
- Local and national advertising

01903 264161

www.curtisandson.co.uk

156 Findon Road, Findon Valley, Worthing, West Sussex BN14 0EL



'Findon's longest established family owned, independent estate agents and valuers'

Findon, Clapham & Patching Churches - October 2018

| DATE | SERVICE | PRIEST | LAYMOC | READINGS | READERS / INTERCESSORS |
|-------------------------------|---------------------------------------|-----------------|--------------------|-----------------------------------|-------------------------------|
| 7th October Trinity 19 | Clapham 10am Sung Eucharist | Colin Cox | Kath Hutchinson | Heb 1:1-4,2: Mark 10:2-16 | Maggie Wright/John Hammond |
| 14th October Trinity 20 | Patching 8am Eucharist | Helena Buqué | | Heb 4:12-end Mark 10: 17-31 | Dorothy Barber |
| 21st Ocotber Trinity 21 | Patching 10am Sung Eucharist | Helena Buque | Kath Hutchinson | Hebrews 5; 1-10 Mark 10: 35-45 | Ann Harper/ John Haskey |
| 28th October Trinity 22 | Clapham 8am Eucharist | Colin Cox | | Eph 2: 19-end John 15:17-end | |
| | Patching Family Service 10am | Colin Cox | | As above | Children |

**OVER 25 YEARS OF DEALING
IN TOP QUALITY ANTIQUES &
INTERIOR DESIGNER FURNITURE
AND OBJECT D'ART.**

Our Services: Free Valuations
Insurance Valuations
Silver & Gold Polishing
Furniture Restorations
Buy and Sell - New items weekly
Silver and Gold Bought



**2 THE SQUARE
FINDON VILLAGE BN14 0TE**

01903 872205 / 07740 947847

www.2thesq.co.uk / adamcollard71@yahoo.co.uk

Findon, Clapham & Patching Churches - October 2018
Walking together in the Way of Christ and sharing His love with others

| | | |
|------------------------------------|---------|--|
| Sunday 7 th October | 08.00am | Eucharist Findon Church |
| | 10.00am | Uplifting Worship Service at Findon Church |
| | 10.00am | Sung Eucharist Clapham Church |
| Sunday 14 th | 08.00am | Eucharist Patching Church |
| | 09.30am | Sung Eucharist Findon Church |
| Sunday 21 st | 08.00am | Eucharist Findon Church |
| | 09.30am | Family Communion Findon Church |
| | 10.00am | Sung Eucharist Patching Church |
| Sunday 28 th | 08.00am | Eucharist Clapham Church |
| | 09.30am | Sung Eucharist Findon Church |
| | 10.00am | Family Service Patching Church |
| Sunday 4 th November | 08.00am | Eucharist Findon Church |
| | 10.00am | Uplifting Worship Service at Findon Church |
| | 10.00am | Sung Eucharist Clapham Church |

Deaths: George Thorns.

Weddings: Andrew Ide and Sara Cranford, Christopher Fullalove and Elaine Rempel, Vince Mason and Anne Marie Hall

Afternoon Plus – 3rd Thursday of the month at 2.30pm. Different events every month, details on the pew sheet.

Light Lunch @1pm - Last Tuesday of the month, at Findon Village Hall. £5. Everyone welcome.

Curry Nights - Findon Tajdar curry nights are 1st Monday of the month 7.00pm (Ladies), and last Thursday of the month (Men) at 7.30pm.

Youth Club - Every Thurs. Term-time only. Ages 12+, 5pm till 7.00pm at The Rectory, Findon.

Messy Church - 1st Tuesday of the month (2nd October). Term-time only. 3.30pm – 5.45pm at Findon Village Hall. All children and their grown-ups welcome.

Monthly Quiet Time - Findon Church 6pm on 2nd Monday of the month (8th October). Half an hour of quiet reflection and prayer.

Village Hall October 2018

For all booking enquiries please
Email: findonhallbooking@gmail.com

| Weekly | Day | Time |
|-----------------------------------|------------|---------------|
| Carpet Bowls | Monday | 14:30 |
| Lambstails (Term Time) | Thursday | 10:00 – 12:00 |
| Line Dancing | Wednesday | 09:45 |
| Danceaholics | Sunday | 19:30 |
| Just Yoga | Monday | 10:30 |
| Tai Chi | Friday | 10:00 – 13:00 |
| You Yoga | Tuesday | 19:00 |
| Reduce Stress & Stiffness Yoga | Wednesday | 19:30 |

| Fortnightly | Date | Time |
|--------------------|-----------------------------------|-------------|
| Circle Dancing | 8 th /22 nd | 19:10 |

| Monthly | Date | Time |
|---------------------|-----------------------------------|---|
| Auction | 12 th | 18:00 (goods 2–4pm, viewing 4–6pm, Auction 6 pm) |
| Bead Magicians | 16 th | 09:00 |
| Downs WI | 4 th , 9 th | 14:30 |
| Gardens Association | 26 th | 14:30 |
| Messy Church | 2 nd | 09:00 |
| Village WI | 11 th | 18:45 |
| Meditation | 18 th | 19:30 |
| Strictly Dancing | n/a | 14:00 |
| Tastevin | n/a | 19:00 |
| Light Lunch | 30 th | 12:00 |

Committee Room
CLOSED UNTIL 2019.

| Other Events | Date | Time |
|---------------------|------------------|-------------|
| Art Class | 13 th | 09:00 |
| Film Night | 19 th | |

The Village Hall website
provides contact and booking details as well as listings of forthcoming events
www.findonvillagehall.com

Buying ■ Selling ■ Letting ■ Commercial ■ New Homes

Michael
Jones
& Company

Have you seen the signs?



**There are unmissable signs that now
is a great time to sell your property.**

Many people are searching for a home to buy or let
in your area.

Whether you're looking for a quick sale, or are simply
curious to find out how much your property is worth,
contact us today for a free, no obligation valuation.

Michael Jones Findon

208 Findon Road

Findon Valley

Worthing

BN14 0EJ

T: 01903 872949

www.michaeljones.co.uk



Offices in Worthing, Lancing, Goring, Findon, Broadwater and Rustington