



Findon

July
2019

Community newsletter for
Findon, West Sussex
Including the Church Parish of
Findon, Clapham & Patching

News

*Findon News is published monthly and is available free of charge from various outlets throughout Findon and can be viewed on the Findon Community website - www.findonvillage.org
Findon News does not endorse any advertisements published. No responsibility will be taken for errors, omissions or any claims made by contributors. Opinions expressed are not those of the publisher.*

Articles for publication (**maximum 650 words**) can be submitted by email to findonnews@zoho.com, or via the 'Findon News Box' in the Village Shop.

Closing Date for Next Publication : 20th July

We need you

We are still looking for help with producing this magazine.

Hilary and myself can keep the magazine going for just a few more months, but we do desperately need some help. It would be a pity to lose this popular means of communication for the village.

By December we will need somebody to send out invoices to all our advertisers and organise payments. Without this there is no means for paying for the printing of the magazine. You will not need to sell advertising.

If you think you may be able to help, please don't be shy, but email findonnews@zoho.com or talk to Hilary or Monica .



View Findon News on the Findon Village website www.findonvillage.org



Merger Announcement

Michael Jones welcome Curtis and Son

*The **same** friendly estate agency service,
with excellent local knowledge,
the **difference** is 'Michael Jones & Curtis'*

We are delighted to announce that Curtis and Son have been incorporated into the broader Michael Jones & Company operation and will trade as 'Michael Jones & Curtis' which will be led by Senior Branch Manager, Peter Hassell and former Curtis and Son Branch Manager, Barry Parker.

If you have any questions, please call Barry on 01903 264161



Barry Parker



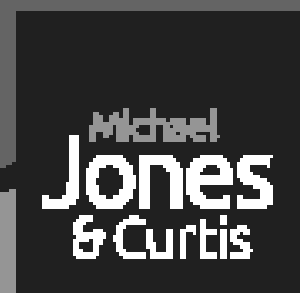
Jane Cockain



Mike Jones



Peter Hassell



www.michaeljones.co.uk

From the Rectory

I was talking to a former parishioner today about special moments in our lives that we fondly look back on with perhaps some nostalgia. For this elderly gentleman it was singing in the choir at evensong as a young lad at Clapham Church. The door was open and a beautiful sunset flooded in, filling the church with a rosy evening light.

These days we rarely have evening services, except perhaps at Christmas and Passiontide. Dwindling numbers have made them unviable. This was brought home very recently when we celebrated Ascension Day. At one time this would have been regarded as an important Christian festival with the expectation that all Christians should try to get to church. But very few came to either of the celebrations offered this year.

I guess we live in a very different world to when the gentleman was a young choirister, and the rhythms of life are both different and the tempo is faster. Access to transport and family and friends spread far apart mean that Sunday evenings might be spent travelling or perhaps recuperating from a day out. Seven day a week shopping has contributed to making Sunday feel like just another day of the week, perhaps a normal day of work for some.

Setting nostalgia aside, I do wonder if as a Christian community we have lost something which is helpful to our lives. Patterns of worship are there to surround our day in prayer and mark those times when we can focus on some specific aspect of the Christian story. Of course, there are many churches that do not have

a Christian calendar and perhaps only offer one Sunday service. That the Church of England does celebrate the festival and seasons continues an ancient tradition. There is good evidence that Ascension Day was celebrated in at least the 4th century, so would have been part of the life of our three churches for as long as they have been standing. It would be a shame if it died out in the 21st.

That said, the church does have to evolve and meet the challenges of living in a new context. Recently we enjoyed a very good concert in the church to raise funds for the Village Hall. We have a new outreach service on the first Sunday of the month, which will take place at 5pm during the summer months. We are currently looking into the possibility of installing some audio-visual equipment to support this style of service. It will also be available for the community to use as church is about the whole of life, not just Sundays and festivals.

By the time you read this we will have had a visit from members of our link parish in Schney, Germany. A full itinerary has been planned and we are very much looking forward to having them stay in the village for five days commencing 14th June. We will let you know more about how this went next month.

Blessings, Colin (Curate)

Please note the new time for the Worship & Praise service on the first Sunday of the month is 5pm.

Rev. Helena Buqué, Priest in Charge and Colin Cox, Curate:
c/o The Rectory, School Hill, Findon, BN14 0TR. Tel: 873601
findon.rectory@btinternet.com www.findon-clapham-patching-churches.com
FB: Findon Clapham Patching Churches

Fairy Dusting

Domestic Cleaning Services



"I love the jobs that most people dread!"

CRB Checked

Fully Insured

- ✓ Free quotations & tailor-made services to meet your needs
- ✓ Flexible schedules - weekly, fortnightly or monthly
- ✓ Can provide own equipment or use yours
- ✓ References available on request

Call NOW - 07745 635320

Teena Dowling, Rustington, West Sussex

www.fairydusting.co.uk

email : fairy.dusting@outlook.com

THE MALAYSIAN TEA COMPANY

**FINDON BASED & SELLING SINGLE
ESTATE PREMIUM QUALITY TEAS**



Tea Bags: These double-chamber black-tea bags use the finest Orange Pekoe tea leaves
Also available as Earl Grey and in other Fruit flavours.

Loose Leaf Black Tea: Available in both Orange Pekoe & BOPF (Broken O P Fannings)



**GROWN IN THE CAMERON HIGHLANDS SINCE 1933
AVAILABLE NOW AT FINDON POST OFFICE**

**CAMERON VALLEY MALAYSIAN TEAS
ONE KUALA LUMPUR OR TWO?**

Findon's Second Stoolball Tournament

Nine teams entered the 2nd Stoolball Tournament on Nepcote Green which was run by Findon church and the Friends of Findon Church. Weather again was kind to us.

It's turning out to be a real Community day, with seven teams from the village and one from Clapham and Patching and one from All Saints in the Valley taking part in the competition. All played three matches and the winning team for the 2nd year running was the Findon Youth Club.

If people weren't playing, they came to see the fun and to enjoy a cup of tea and cake. The beef burgers and hot dogs sold well and the Friends made a profit of £400 for Church funds from the refreshment stall.



It is a day when all ages turn out, from 5 year olds playing on the grass, to many teenagers turning up and asking to play. Marigold Somerset who is into her 90's was sitting at the side of the outfield cheering on the Clapham and Patching team.

A very big thank you to everybody who helped either before or on the day, (too many to individually mention). Without those people these events would never happen.

Graham Langford



AcTechUK.com

Making Technology Work For You

Help with all aspects of technology for your home, mobile and business.

PC/Laptop fix, Network setup, telephone, audio visual services
£40 call out with first fix and advice
No fix, no fee. Findon Valley based.

25 years experience.

Customer Service Like it Used To Be!

Please call Andy:

01903 930850 or 07515 948096

Email: info@actechuk.com

RELIABLE WINDOWS

Friendly, Local, Well Established

WINDOW CLEANER

Contact Chris for a quote

07780 687522

chriswitten10@gmail.com

Window cleaning service offered
Monthly, Bi-monthly or Quarterly

Soffits, Fascias, Guttering,

Conservatory Roofs

**** No Job Too Big or Small ****

Water Fed Pole System or
Traditional Window Cleaning



Opening Tuesday 25th June

**Come and visit the new DeeDee's
All welcome, new owners and a whole fresh
friendly look to our beautiful village.**

Opening Times

Monday	8AM - 2PM
Tuesday	8AM - 5PM
Wednesday	TBC
Thursday	8AM - 5PM
Friday	8AM - 5PM
Saturday	9AM - 5PM
Sunday	10AM - 3PM

**Sandwiches, cakes and delicious treats are all
available at our retro village tea room.**

**5 The Parade Npcote Lane, Findon, Worthing BN14 0SE
Mobile: 07540 467609**

R J Maslin of Worthing

- * Traditional French Polishing ***
- * Antique Preservation ***
- Modern & Antique Furniture**
- * Restoration & Repairs ***
- Tel: 01903 719879**
- Mobile: 07743528139**

JULIE JORDAN

**Professional Curtain Maker
and Interior Design**

**Phone for free estimates
01903 263823 / 07801687155
Juliejordan100@yahoo.co.uk**

Findon Village Store News - Volunteers Still Needed

Hopefully the weather will have cheered up by the time this article goes to print! Despite the dismal start to summer I think that ice-cream should always be on the menu, we are lucky to have the award-winning Caroline's dairy as a local supplier. The company has been around since 2008 and operates from Chalder farm near Chichester, using their own milk to produce delicious ice-cream on site. We stock the mini pots and also the 500ml. Some of the flavours we currently have in stock: passion fruit sorbet, mango sorbet, mint choc chip, salted caramel, toffee & honeycomb, strawberries & cream, Irish cream and bubblegum.

Another award-winning supplier we are very delighted to stock is the excellent

Wiston family sparkling wines. Sparkling wine (or champagne) has always been a summer favourite and ideal for a special summer event. English sparkling wine has certainly come a long way in recent years. Last years heat-wave was good news for English wine producers and Wiston was one of the first English producers to be awarded the prestigious decanter world wine awards 2019 best in show trophy and also winery of the year at the GB wine awards 2018. We stock the rose and white non-vintage £24.95 and Wiston estate vintage £32.95 our pricing is the cheapest in the local area, so why not treat yourself or a friend!

Jo O'Dell Committee member/volunteer

	FINDON VILLAGE STORE	Tel:
	<i>Post Office & Newsagency</i>	01903 877110
	Groceries; Bread; Cakes; Freshly made Sandwiches; Beers, Wine & Spirits; Tobacco; Cards	
	<i>Run by the Community for the Community</i>	
	Shop Opening Hours:	Post Office Opening Hours:
	Mon to Sat 07:00 - 19:00	Mon to Sat 08:30 - 17:30
	Sunday 07:00 - 12:00	Sunday 08:30 - 12.00
Horsham Road Findon BN14 0TF	www.findonvillagestore.org	findonvillageshop@gmail.com

Curry Nights - All welcome

The next Curry Nights at

The Tajdar Restaurant

Ladies - Monday 1 July at 7.00pm

Men - Thursday 25 July at 7.15pm

Light Lunch @1pm

Last Tues of the month

Next Lunch 30 July

at Findon Village Hall. - £5. -

Everyone welcome.

Nanny Sue's Best Eggs

www.Facebook.com/NannySuesBestEggs

Findon Free Range Eggs

South Lodge Cottage, Rogers Lane, Findon, BN140RE

Tel: 01903 873007, Mob: 07855 846963

Astracolour Photographic and Picture Framing

(Eric Beadel L.M.P.A & Edward Beadel - Partner)

www.astracolour.co.uk

We specialise in Wedding photography and picture framing.

A full portfolio is available to view.

Tel: for an appointment day or evening.

Copying and restoration of your old photo's
and instant passport photographs (4 for £8.00)

35 The Quadrangle, Findon Village Tel: 01903 877677

OVER 25 YEARS OF DEALING IN TOP QUALITY ANTIQUES & INTERIOR DESIGNER FURNITURE AND OBJECT D'ART.

Our Services: Free Valuations
Insurance Valuations
Silver & Gold Polishing
Furniture Restorations
Buy and Sell - New items weekly
Silver and Gold Bought

2 THE SQ
By Adam Collard Antiques & Interiors

2 THE SQUARE
FINDON VILLAGE BN14 0TE

01903 872205 / 07740 947847

www.2thesq.co.uk / adamcollard71@yahoo.co.uk

Findon Village Hall Trust

High Street, Findon BN14 0UG



Fun



Dog Show

Saturday 6th July

Starts 1pm till 4.30pm

Registration 1.30pm

Temptation Alley

Raffle

Licensed Bar

Pimms Tent

Ice Cream

Cafe

Sewsilver

28 Guildbourne Centre, Worthing
(opposite Wilkinsons)

Beautiful, Affordable Jewellery & Gifts

- Stunning sterling silver jewellery
- Contemporary titanium, steel & leather jewellery
- Unusual and unique gifts & greetings cards for all occasions

Tel: 01903 218994 www.sewsilver.com

KJ ROBERTS

Property Maintenance and Electrical services

Friendly locally based tradesman.
Interior/exterior decorating, tiling,
flooring, bathrooms, kitchens,
decking, patios, fencing
and any odd jobs.

All Electrical work undertaken.
No job too small, Free estimates.

Tel Findon 873913

mobile 07947233424

Email jankevrob@aol.com

UNABLE TO TEND A LOVED ONE'S GRAVE

A service Tailored to your
Requirements and pockets,
we can do it for you.

Findon / Worthing area

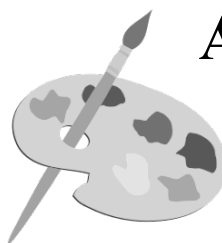
For a leaflet, more information
or to arrange an appointment

Please call G. C. F. Services

Tel : 01903 873813 or 07785230913

email : gcfgraves@aol.com

website : www.gcfservices.com



Art Classes For All

Providing a bespoke service
for all abilities.

- Practice drawing skills
- Explore different Media

Small social workshops in a home studio

Above all lots of fun, coffee and cakes!

Please contact Anthea:

antheablackmore1@gmail.com

01903 882226 / 07817 565472

Pure

Locally produced chocolate truffles
without any colourings, additives or
preservatives.

Free delivery to
Findon village

Chocolate Truffles



www.purechocolatetruffles.co.uk or contact Kim on 01903 873829

Findon Village Summer Revels 2019

Wow what an incredible Summer Revels this year! One of Findon Village's oldest traditions, now dating back over 160 years, began at St John the Baptist CofE Primary School on Saturday 18th May with a children's procession to Pond Green led by the traditional accordion player Tom Townsend (on his 29th year)! The rain held off and the sun shone down as the children performed their well-practised country dancing watched on by many eager parents and locals before making their way back to the village school for the hugely popular maypole dancing. The event was then officially opened by this year's popular Worthing Town Crier Bob Smytherson.

Bob Smytherson also crowned this year's beautiful May queen and attendees – Freya as the Queen, with Ellie and Rhianna as the attendees.

Once opened, this year's Summer Revels saw many hundreds attending raising thousands of pounds for the charity St John the Baptist CofE PTA dedicated to supporting the village school. With circus performers, children's entertainers, bouncy castles, Total Wipeout, assault courses, giant slides, soft play zones, garden games, candy floss, beer tents, pimms, bbq's (cooking Peckham Butchers finest handmade burgers and sausages), the amazing Worthing steel band, the UK's Top Extreme Mountain Bike Stunt Show and a whole host of village fete activities, it really was a village tradition not to be missed! The raffle and draw alone raised many hundreds and with generous donations from The Gun, Sonos, Leeds Castle, Angmering Manor, Audi, South Downs Gun Club, Worthing Theatres, a ½ tonne of horse manure with free delivery (!!!) and many many more, every winner left feeling very lucky! On top of this you could even win a Porsche for the weekend!!! Unbelievably all of this was run solely by volunteers, organised by the

village school's PTA with free admission to all!

The St John the Baptist CofE Primary School's PTA is an incredibly hardworking charity that works tirelessly throughout the year organising various village events. It encourages closer links between the local community and school by organising social activities that not only raise funds but also provide an opportunity for residents, parents, staff and pupils to get together. This also includes the Findon Village Firework Fantasia, the Findon Village Circus and the Findon Sheep Fair Refreshments in previous years. Funds raised by the PTA provide essentials and extras not already provided by the school's budget - most recently the school have just renovated the entire outside garden areas inclusive of roly poly pig composters. Along with bee hives for the children to manage, some wonderful chickens, a complex nature trail, an all-weather canopy for the playground, a beautiful greenhouse overflowing in abundance with vegetables, herbs and stunning flowers, £1500 of essential maths equipment and all the coach transport to numerous trips, these fundraising ventures really are a necessity!

Our current projects are to improve on the complex nature trail with other wildlife habitats, discuss plans for a new outdoor classroom and to replace the IT Suite at a cost of over £30,000!

Following this year's Summer Revels the PTA team would therefore like to give a huge thank you to all those who generously donated their time, gifts or the lending of their equipment to make the Findon Village School's Summer Revels 2019 such a successful day and the children, school staff and everyone that attended for producing such an incredible atmosphere!

- Sadie Collis, Chairman, St John the Baptist CofE Primary School PTA



Local Freelance Hairstylist

Wig Stylist & Wig Supplier

Hair & Wig services provided in the comfort of your own home



Services: Colouring Services, Cut & Blow dry, Hair Up, Keratin treatments, Sets, Perms, Wig consultation/fitting and styling



All Colours are Organic, and Vegan friendly - Organic hair products used



Member of The Freelance Hair Association &

MyNewHair (charity for medical hair loss sufferers)

Fully Qualified

Call Rita on 07881 863271

Fully Insured

www.hairs2uworthin.co.uk

FB: Hairs 2u -Rita

VIV'S

Help in the home



ARE YOU ELDERLY, DISABLED or maybe recovering at home from being in hospital and need that little bit of help or simply a hand with the everyday running of your home?

I offer a reliable and a one to one personal service. I have over 20 years experience and references are also available.

Please call Viv on **01903 778552**

I can help with:

- ✓ Spring cleaning
- ✓ One-off cleans
- ✓ Light meals

Assistance such as:

- ✓ Making beds etc
- ✓ Weekly or fortnightly cleans
- ✓ De-cluttering



ALLCLEAR GARDEN SERVICES

- ** Lawn Mowing **
- ** Hedge Cutting **
- ** Garden Tidy's **

CONTACT: Wayne Hardie

TEL:- 07733105548

email: whardie09@btinternet.com

FINDON SMALL WORKS BUILDING COMPANY

FLINTWORK SPECIALIST, BRICKWORK, RE-POINTING, PAVING & PATIOS, EXTENSIONS, LANDSCAPING, FENCING.

CALL PAUL

07939 210354 or 01903 872147

Concert for the Village Hall

On Friday 7th June a concert was held at Findon Church to raise money for the Village Hall. Local singers and musicians contributed to what turned out to be a very successful and enjoyable evening. The event was kicked off by The Monarch's Way Singers, followed by;

Piper Scrace (Singer/Soloist)
Simon Whitchurch (Organist)
Morton Woodburn (Guitarist and Singer)
Findon Folk Group
Joseph Baxendale (Keyboard)
Nancy Haywood (Singer/Soloist)
David Gear (Keyboard)
Canticle

As a result, just over £800 was raised, and although it took some arranging, special thanks go to Carole Thomas and Graham Langford for their organisation, and to John and Barbara Taylor for the loaning of equipment.



Messy Church

The next Messy Church is
2nd July

(and every 1st Tuesday of each month)
at 3.30pm in Findon Village Hall.



All children and their grown ups welcome.

For more information please ring The Rectory on 873601

**your
community
vet**

Expertly caring for dogs, cats and other domestic pets in West Sussex for over 35 years!



-  Puppy & Kitten Clinics
-  Microchipping & Pet Passports
-  Orthopaedic, Spinal, Soft-tissue & Reconstructive Surgery
-  Laparoscopic (key-hole) Surgery & Advanced Laser Therapy



 **NEW Extended Vet Consulting Hours**

We've increased our weekday consulting hours, ensuring our clients have greater access to the vets at the most convenient times.

 **Introducing Pet Health Plans**

Simple, affordable & money-saving
A proactive, preventive approach to your pet's healthcare. Please visit our website for more info.

43 School Hill
Storrington
01903 743040

179 Findon Road
Findon Valley, Worthing
01903 877325

2 High Street
Steyning
01903 816428

www.crosswaysvets.co.uk

**For all your home water needs,
speak to the professionals - UKh²o**

Water softeners

installation, servicing and salt

Filtered drinking water systems

and boiling water taps

Kitchen and bathroom design

plus installation

Heating and plumbing services



01903 500 551 | www.ukh2o.com
50 Ferring St, Ferring, West Sussex BN12 5JP



Gardening Titbits

Forty years ago in my early gardening days my garden finished flowering at the end of June. Everyone else's gardens were still full of colour but mostly from bedding plants and I preferred something more permanent. I started looking for plants that flowered in July and came across

Japanese anemone "September Charm", pale mauve. Anemones are so easy, preferring semi-shade (North or East) and have attractive leaves 2' tall with flower stems up to 5' tall. They are unbothered by pests and diseases and flower for 10 weeks between July and October. Pale mauve is my favourite but I also grow white "**Honorine Jobert**", two-tone deep pink **hupehensis "Hadspen Abundance"**, and gorgeous semi double deep rose pink "**Prinz Heinrich**" (in a tub as it spreads too quickly). **Aster frikartii "Monch"** was another wonderful find which I grow to this day. This aster is disease free and is smothered in 2" lavender blue daisies with a yellow centre, again for 10 weeks from July to October. I allow it to flop and it creates a gorgeous specimen. It requires a sunny site and well watering at flowering time.

Newly fashionable **verbena "Bonariensis"** is so beautiful, so easy and yet so worryingly invasive. We stood in a garden centre looking at it when a young couple came along. The wife told the husband, "Remember what we said; we will never get another one" and they looked at it longingly and then reluctantly walked away. I knew this meant it was trouble but we bought it anyway. It was gorgeous; 4' tall,

Catherine York

strong, square green stems widely spaced with small lilac coloured pompoms from June to November and then attractive seed heads all winter. I couldn't cut them down they looked so interesting. I knew the consequences. The following spring hundreds of seedlings appeared, everywhere. Luckily, before I could face the task of weeding them out, they grew to 6" tall and the more vigorous ones had already swamped the weaker seedlings, and at 6" they fitted very nicely into a human hand and it was easy to pull out a whole handful at a time. I could see the wife's face in my mind saying, "Remember what we said". I still grow them but with care, cutting off the dead seed heads before they disintegrate and seed themselves all round the garden.

I grew hardy **fuchsia "Mrs Popple"** in the ground for many years, making a 3' bush of the crimson/purple variety. Sometimes, after a mild winter it would start getting its new leaves on the old stems before I had chance to cut them down and then carry on until the frosts. "Mrs Popple" looked particularly good with pale blue aster frikartii nearby, and low growing **hebe "Pewter Dome"** with its white flowers appearing just at the right time to compliment the dark fuchsia. Now, I am trying fuchsia "**Dollar Princess**" instead, which is similar in colour but more compact at only 18" tall. So far it has come through the winter unscathed and started flowering in mid June. It is hardy and has an award of merit.

Is this the oldest Findon Pup?

This is Quincy. He will be 16 on 14.7.19. I wonder if he is the oldest dog in the village? Perhaps other readers could send in photos of their elderly fur babies to find the oldest Findon pup?

Hari



Village House Hotel
The Square
Findon Village
BN14 0TE

Village House

* **Wednesday Thai Night:**

Fresh Home Made Curry Pastes, Unique Flavours,
Healthy Ingredients...

Enjoy Our Thai Tapas Styled Starters Followed by
One of Our Fabulous Main Courses... Only £16-95

* **Wood Fired Pizza**

Every Tuesday Night

Mid Week Two Course Lunch Menu

Grab a Quick, Delicious Meal Mon - Fri

£12-95

Great Food ~ Great Beer ~ Great Place to be.....anytime

Great Roasts
Served Every Sunday

01903 873350

facebook @Findonvillagehouse

www.villagehousefindon.co.uk

Our visitors from Schney



Despite the mixed weather, we found a sunny day during the visit of 14 guests from our link Parish in Germany!

We enjoyed visiting Tarring Church as Part of the St Richard's Trail organised by Nancy Ford, ending up in Chichester with some informal worship at St Richard's Shrine.

That evening we had a great time at the Barn Dance in All Saints Hall.

On Sunday, everyone joined us for a Service in German and English at Findon Church. After lunch, we had tea in the pier, followed by a blustery walk! Schney is a long way from the sea, so our visitors love a trip to Worthing beach. In the evening, the Black Horse provided a great buffet spread, while 8 mixed teams played skittles. Ute and Chrissie from Germany were the only ones to get all 9 pins down!



Lesley Chamberlain led a visit to a beautiful Sussex garden, after which we visited the Blue Idol, where a German speaking guide explained about the Quaker movement. We experienced the tranquillity of this tradition with a short time of silence in the Meeting House, then shared a picnic in the peaceful gardens there.

We plan a return visit to Schney in the October half Term, 2020. All are welcome!

Friends of St John the Baptist Church Findon

**Invite you to join us for
tea & scones
at our second AGM**

**Sunday 4th August
3.30pm**

at Findon Church

**Thank you to Dawn for
all her patience and
hard work in the Parish
office, and best wishes
to her in her new
position.**

**We now welcome Wendy as
our new administrator.
Helena**

Dog friendly Holiday Home in Findon

The Haven @ Findon is a modern 2 bedroom bungalow in Findon village that sleeps up to 4 people and is ideally situated for family and friends (and their dogs) visiting relatives, attending weddings, parties or just wanting a weekend break or holiday. It is available on a self-catering basis from a minimum 3 night stay.

We are rated 'Excellent' on Trip Advisor and AirBNB.

You can visit our website -www.thehavenfindon.uk or for more details or enquiries phone Steve on 07590533892

CLIP CLOPS

Holiday Accommodation

In Findon Village

Lovely spacious self catering accommodation - sleeps two

Twin bedroom, Sitting room, Shower bathroom, lovely spacious sun lounge, Kitchen and garden.

Dogs welcome. Easy walk to local pub & shops or onto the downs.

Minimum stay 3 nights.

Contact: Karen 07886650747
karmitage58@gmail.com

HOLIDAY ACCOMMODATION

“Little Longmead” Findon Village

Sleeps 4 - Self Catering

1 Double King Size, 1 Twin room, Bathroom Kitchen, Lounge Dining, Lovely Views

Own Enclosed Garden & Patio with

Garden Furniture and Barbecue

One Well Behaved Dog Welcome

Minimum Stay 2 Nights

Contact Ann: Tel - 07802507976

Email - pamamm@talk21.com

DOMESTIC HEATING & ELECTRICAL SERVICES LTD

Heating, Plumbing & Electrical

Est 1968



- Boiler Installations
- Electric Boiler Installations
- Boiler Servicing & Repairs
- Gas & LPG (all appliances)
- Power Flushing
- Hot Water Cylinders
- Gas Fires & Wood Burners
- Bathroom Installations
- Radiator Installations
- All Plumbing Works



01903 442108

1-2 The Forge, Findon Village, West Sussex, BN14 0SE

www.domesticheatingservices.co.uk

Findon Downs WI

We met in the Village Hall on Tuesday, 11th June and were pleased to see the sun shining after a heavy downpour of rain in the night. We celebrated the afternoon by holding a Strawberry Tea and approximately 20 of us sat at a long table with bowls of strawberries and cream plus delicious scones which our Secretary, Evelyn had made and strawberry jam provided by Maria. At the start of the meeting, a report was read from the Delegate who represented, Findon Valley, Findon Downs and Findon Village, and who attended the recent Conference in Bournemouth. After finishing the business of the day, we were delighted to welcome three ladies from the Sussex Police with Anna-Marie giving a talk on SCAMS. Sussex Police introduced Op Signature in 2014, focusing on vulnerable victims of fraud. Every year, the British public loses

billions of pounds to fraudsters who bombard us with online, mail, door-to-door and telephone scams. If you want to stay on top of scams and up to date about crime prevention advice, visit the Sussex Police website at www.sussex.police. To name some of the things that can happen to any one of us, always remember to lock your doors, windows and remember never to place a bin under a window because this is an easy way for an intruder to enter your premises. There were so many subjects of SCAMS discussed and too many to write in this article. Our next meeting will be held in Findon Village Hall on Tuesday, 9th July at 2.30pm to 4.30pm
Speaker: Mr Bob Wragg, "Miscarriage of Justice" You decide.
Competition: A Rose.
All visitors welcome - we look forward to your visit. Jill Schiller Findon Downs WI -President

Findon Village WI

Our June meeting welcomed Jean East who gave us a talk on Parham House & Gardens. Jean gave us a brief history of Parham illustrated with slides of what is one of the country's finest Elizabethan Houses. Jean was volunteer gardener until very recently – what an amazing garden to work in!

The competition, a table decoration, was won by Sassy who created a wonderfully whacky centrepiece covered in liquorice allsorts.

Gay brought along the fabulous entries from this year's South of England show. Sharon won first prize for her trench cake and several entries achieved highly commended. The cooperative entry was of a very high standard; Gay's lampshade gaining full marks. A huge

thank you to all the ladies who worked so hard. There are lots of photos on our website or Facebook page – take a look.

Our next meeting is Thursday 11th July. Come and learn about Chinese freshwater pearls.

The next coffee morning at Dee Dee's is Thursday 18th July from 10.30 – all welcome.

Visit our website – <https://findonvillagewi.wixsite.com/mysite> or find us on Facebook -Findon Village WI for the latest information of our various groups or email findonvillagewi@hotmail.co.uk

Visitors are very welcome – we look forward to seeing you

Paddy Winter - President

Findon Sheep Fair

Nepcote Green, Findon BN14 0SD

Saturday 14th September 2019

FREE ENTRY!

**Fun for all the family
From 10.30am**

Great selection of food
Country crafts
History of Sheep/Sheep Shearing
Sheep Exhibits
Sheep Judging
Sheepdog Demonstration
Harris Brothers Traditional Fair
Falconry
All Day Licensed Bar with Real Ale

Pony Rides
Punch and Judy
Morris Men & Women
Carriage Rides
100+ stalls
Vintage & Classic Vehicles
Harveys Trailer
Childrens Circus Skills
And many more attractions

Tickets for Friday and Saturday
night available soon!
Check on our website for details &
prices: www.findonsheepfair.co.uk



Car Park £5



News from Paws Animal Sanctuary

A cat owner asked us to take her cat as she said the cat kept falling over the balcony. The first time she broke her tail, the next time she injured her back, the last time she broke her palate. The poor cat is only two yrs old but after having her tail removed and now having trouble eating she will probably be with us for some time.

The stray Bengal cat has not been claimed, she is getting fatter by the day. She was very thin when she arrived so we hope it is just our good food and that she is not pregnant!

We had a phone call from a lady in Crawley who was sitting outside her house with her three cats. She told us she had been evicted and could we help her. We told her to bring the cats in. She had no money, and no car, so we told her if she could get a lift we would pay for the petrol. The cats are beautiful, so friendly obviously been well cared for. We said we would take care of them for a month, giving her time to find somewhere to live. After that we would find them a nice home together. We asked her to sign them over to PAWS just in case we never hear from her again. We have to put a time limit on it now because we have had cats left with us for up to a year with no money for their food.

A lady whose house had burnt down came in with two cats. One of the cats had kittens a few days later. The Lady was going to arrange to go into B&B. She had lost her phone in the fire, but said she would get in touch. We never heard from her again. We had the kittens' injections done. One day she arrived while Sheila and I were out. She

told a Volunteer she had come for her cats and that we knew about it. She took the cats leaving us with the kittens, with not even a word of thanks or a donation.

Another left a cat for a couple of weeks after being thrown out of her flat promising to come back with some money for cat food as she had no cash on her just a card. A week later the cat had a kitten, the weeks turned into months. She rang out of the blue and said she was working in Devon but wanted her cat back. After a year, because we were unable to contact her as she never answered her phone, we rehomed the kitten and took the mummy cat into a local Vet to have her spayed. The Vet put the scanner over the cat who was chipped. She rang the owner and managed to get her to answer the phone. She said not to spay her and her Mum would pick the cat up, and that her Mum lived in Worthing!!

from Stacey.

*Paws Animal Sanctuary Findon
15 The Oval, Findon Village
West Sussex, BN14 0TN*

01903 872 734 / 0790 447 6819

We never use an ansaphone so keep trying someone is always around.
24hrs. 7days a week.

www.pawsanimalsanctuaryfindon.co.uk

Registered Charity 1096231



Findon Planning Applications

Planning applications for Findon are under the authority of South Downs National Park and listed on the SDNPA website (www.southdowns.gov.uk).

Findon Parish Council (FPC) Planning Committee meetings are scheduled monthly to consult on planning applications received from the South Downs National Park Authority (SDNPA). Parish Consultation Letters (PCL) received from the SDNPA are displayed on the Notice Boards outside the newsagents and the Village Hall, and published on the FPC website (<http://findon.arun.gov.uk>) along with the schedule of Committee meeting Dates.

Please note that due to Findon News publication deadlines, some applications may have already been placed before the Committee. Residents should check the Notice Boards and FPC website regularly to view notices and meeting details.

Any enquiries should be address to the FPC Clerk - 01903 877225.

Since the last issue of Findon News, the following Planning Applications have been posted on the SDNPA website:

Garden shed erected in rear garden Treetops Cross Lane Findon BN14 0UG Ref. No: SDNP/19/02825/HOUS

Discharge of Conditions 5, 6 and 7 on Planning Permission

SDNP/18/05896/FUL, Cissbury Nephcote Findon BN14 0SR Ref. No: SDNP/19/02819/DCOND

Discharge of Conditions - 3 The Vicarage 11 School Hill Findon BN14 0TR Ref. No: SDNP/19/02768/DCOND

Dormer roof extension (facing highway) and replacing roof and fenestration to rear sun-lounge. Dobbins 38 Cross Lane Findon BN14 0UG Ref. No: SDNP/19/02485/

Single Storey Rear Extension - 12 School Hill Findon West Sussex BN14 0TR

T1 Scots pine in neighbouring property - 34 Nephcote Lane: Lateral prune High Trees 36 Nephcote Lane Findon West Sussex BN14 0SG Ref. No: SDNP/19/02445/TPO

Redundant garage barn with storage loft to be converted into accommodation with three bedrooms at first floor and living room with kitchenette at ground floor. Two of the garages will remain in use. North Lodge Horsham Road Findon Worthing West Sussex BN14 0RQ Ref. No: SDNP/19/02369/

Proposed single storey front extension 3 Beech Road Findon BN14 0UN Ref. No: SDNP/19/02358/HOUS R

Internal remodel and renovation of property. Removal of upvc conservatory and replace with two story extension matching materials of existing brick and flint. Further extension to north gable of property. North Lodge Horsham Road Findon Worthing West Sussex BN14 0RQ Ref. No: SDNP/19/02360/HOUS

Raise canopy by 5 meters. Thin canopy by 15% and reduce spread by up to a meter. 16 Convent Gardens Findon Worthing West Sussex BN14 0RZ Ref. No: SDNP/19/02370/TPO

Sub-division of existing dwelling to create 2no. dwellings Gateways Horsham Road Findon BN14 0RG Ref. No: SDNP/19/02301/FUL

200 Club

This month's winner of the £25 prize is number 96 – S Lines

Findon Village Tree Warden

I wanted to take this opportunity to introduce myself and say a bit about what I intend to do as tree warden for the village. It was following an advert in the Findon News that I applied for the role, having recently moved to the area with my wife from Bath. I was working for the National Trust, in charge of the restoration of the 18th century landscape garden Prior Park. In all I worked for the trust as a gardener in a variety of roles for 37 years. I have always been interested in trees both ornamentally in gardens as well as in the countryside and landscape.

Trees are such a feature of the English countryside it is easy to take them for granted. They are under pressure and need protection like never before. Climate change, building development, agricultural activities and especially disease all combine to make life difficult for trees. In Findon we are lucky in having good tree cover on the whole, indeed West Sussex is reckoned to be the second best county for tree cover after Surrey.

The role of tree warden is voluntary and involves taking an interest in what is happening to trees in the neighbourhood, spotting opportunities for planting, looking after newly planted trees and discussing

issues residents might have concerning trees. Wardens do not have any powers to enforce rules and regulations. Some trees are subject to Tree Preservation Orders and it is especially important that they are protected. Identifying which these trees are is proving particularly challenging.

My aim in the next few months is to complete a survey of the village to record what the current situation is, identify significant trees and monitor disease. Most people are aware of the threat of Ash Dieback disease, a rampant fungal disease which looks set to wipe-out large swathes of one of our most common species.

Forecasts vary but many estimate that 95% of Ash will be lost – a horrible prospect. The worst affected area round Findon is Cissbury Ring where most Ash on the north side of the hill are affected. It is important to monitor the spread and effect of the disease, potentially there will be many dangerous trees to be dealt with. On a brighter note, I intend to look for sites in the village where new trees might be planted. Roadsides, play-areas and perhaps privately owned areas might be suitable.

If you have any issues or ideas you can contact me at hilandmat@talktalk.net
Matthew Ward

Ash tree disease impacts West Sussex

Ash dieback (ADB) is a devastating disease that has the potential to kill over 95% of West Sussex ash trees over the next 10 - 20 years. As nearly 21% of all broadleaved trees in West Sussex are ash, this would have a major impact on the county's landscape, wildlife and habitats.

Although there is no treatment, a small percentage of ash may be resistant to, or tolerant of, the infection. Survivors can be used for breeding tolerant ash trees for the future.

West Sussex County Council is working with district and borough councils, other organisations, and land owners to take a coordinated approach to mitigate potential health and safety risks. There is likely to be selective felling of ash trees and reactive work this summer.

For more information visit the [West Sussex County Council website](#)



Findon Pantomime

To help raise much needed funds for both the Village Hall and the Friends of Findon Church, it is hoped to put together a pantomime to be performed next January over 3 nights, with the possibly of a matinee as well. This may seem a long way off, but for the event to be a success a lot of preparation and help will be necessary.

The pantomime will be one everyone will be familiar with and has a working title of Finderella!

If you are interested in helping either by performing or behind the scenes please let us know. Apart from treading the boards we will also need help with the stage design and building, costumes, lighting, publicity etc, or just helping on the night.

Please email us at findonpanto@gmail.com or phone/text 07740 648018

Many thanks, Richard Bell



Findon Village Hall Trust

Chairman's Letter July 2019.

I am pleased to confirm that the Main Hall is now fully functioning. The sound system with Loop for the hard of hearing is once again fully operational.

Our many and varied regular clubs and societies ensure that we cater for young and old, whatever your fitness.

During June the Hall was hired for a wedding, an anniversary party, and a variety of family parties and celebrations, many of whom expressed their delight with the improvements to the hall and gardens.

We are currently appealing for donations of Holly, Pyrocanthus, and Elder; in fact any spiky hedging that will form a boundary between the drive up to the pre-school and the Hall grounds. The old fence perished many years ago. This would be a deterrent to future attacks by vandals.

Fund raising continues, and an extra Film Night in June added a further £564.32. to our building fund.

A donation from the special concert by the people of Findon meant a donation of £823.87. was generously donated to our building fund.

A donation in memoriam of Pam Ockenden, a resident and past Chairman of Findon Village Hall Trust was kindly donated by her friend Anne. It is extraordinary kindness and generous

support such as this, spurs us on to raise the money needed to finish the extension.

EVENTS TEAM

The Findon annual Fun Dog Show is scheduled for 6th July. We are working hard to make this a fun day out for all family. We have planned an afternoon of fun for your favourite pooches, and will be selling the first Findon Doggy Ice Creams on the day.

A Pimms Tent, Hot dog Stand, and New Forest ice cream will be open in the garden, and of course our Café will be serving the Findon's own version of "Chicken in a Basket" as well as afternoon tea. In addition there will be several stalls, including local charities selling a range of goods. Entry is free of charge.

Registration for the Dog Show is at 1pm. Please come along and join in.

Grant applications are ongoing. They are progressing well.

Dates for you diaries are as follow:

FILM NIGHTS 20th Sept, 18th Oct, 15th Nov

OKTOBER FEST 26th Oct

CHRISTMAS 1950'S PARTY AT FINDON VILLAGE HALL, Date- 14th Dec.

This will include dinner, and yes, ELVIS WILL BE IN THE BUILDING! More information later.

Finally, many thanks to all the volunteers who so generously give of their time.

Judith Davies Chairman

HMRC SCAM - What you need to know

- Action Fraud has experienced an increase in the reporting of malicious calls and voicemails, to members of the public purporting to be from Her Majesty's Revenue & Customs (HMRC).
- Fraudsters are spoofing genuine HMRC telephone numbers to deceive their victims over the phone. The fraudsters state that as a result of the victim's non-payment of tax or other duty, the victim is liable for prosecution or other legal proceedings in order to settle the balance. The fraudsters suggest victims can avoid this, by arranging payment to be made immediately by methods such as bank transfer or by purchasing iTunes gift cards.
- If the victim is hesitant or refuses to comply, the suspect makes a threat such as immediate arrest, sending bailiffs to the victim's address or, in some cases, deportation.
- Often, the period for which the tax is allegedly due is distant enough to guarantee the victim will have little, if any, paperwork or ability to verify the claims. Once the money is paid the suspects sever all contact with the victim.
- In genuine cases, HMRC will initially make direct contact with you via post/letter and potentially follow up that letter with a phone call at a later date.
- If HMRC contact you via telephone they will quote the reference number on the initial letter you should have received. HMRC will not discuss something you are not already aware of, like a tax investigation, and will **NOT** demand immediate payment.

It is vital that the public exercise caution when receiving messages or telephone calls of this nature.

What you need to do

- Always question unsolicited requests for your personal or financial information. Just because someone knows your basic details (such as your name and contact details), it doesn't mean they are genuine. Instead, contact the company directly using trusted methods such as a known email address or phone number.
- Legitimate organisations wouldn't ask you to pay taxes, bills or fees using an iTunes gift card, or any other type of voucher. If you're contacted by anyone that asks you to do this, you're likely the target of a scam
- Don't be rushed or pressured into making a decision. Under no circumstances would a genuine bank or some other trusted organisation force you to make a financial transaction on the spot.

Report Phishing attempts. If you receive a call, text or email of this nature and have not lost money, you can report this as phishing to Action Fraud

Staying Safe Online Resources from West Sussex County Council

Keep up to date with the latest online safety advice by signing up to the free **Staying Safe Online E-Newsletter**.

This will share helpful tips, information, upcoming events, training and news each month to help you and your family stay safe. To sign up or visit <https://public.govdelivery.com/accounts/UKWSCC/subscriber/new> and register or login to your account and tick 'Staying Safe Online' to subscribe.

— THE —
MELLOR PRACTICE

INDEPENDENT FINANCIAL ADVISERS

**Is your answer 'YES' to any of these questions?
Then we can help you!**

- Confused by the array of pensions options?
 - Need to invest an inheritance or pension lump sum?
- Worried about long term care funding?
 - Fed up with your cash ISA return?
 - Ethical investment a concern?

— ● ● ● —
We are a team of fully qualified advisers, who can provide you with independent financial advice. Established locally since 1984, we pride ourselves on our friendly, professional service.

NOW OPEN AT
31 Chapel Road | Worthing | West Sussex | BN11 1EG

Call us on **01903 882007**

Visit our website **www.themellorpractice.co.uk**

Drop in to **our Worthing office**

Or call and make an appointment to see us at **our Arundel office**

Your first 45 minute consultation is at our expense

The Mellor Practice Ltd is an appointed representative of Lighthouse Advisory Services Limited, which is authorised and regulated by the Financial Conduct Authority.
The Mellor Practice Ltd, Registered in England, No. 10567558
Registered Office: 41b Beach Road, Littlehampton, West Sussex, BN17 5JA
The value of your investments can go down as well as up, so you could get less back than you invested.

Findon Village Pre school News

It's been a busy summer term so far at Findon Village Pre-school. We had a sponsored bike ride where the children were able to bring their own bikes and scooters from home for the week. As you can imagine this caused great excitement from the children and as the week went on, we extended their learning and physical development by adding ramps, and chalk pathways with numbers etc that they had to follow. With all the children's hard work and the generous support from their parents we managed to raise approx. £300.



The money we raised is going to really help us with paying towards our garden makeover that we had done at the beginning of term. We are lucky to have some very clever dads Joshua Tutt (gardener) and Jake Riley (Tree Surgeon) that have totally revamped part of our garden and turned it into a lovely naturally resourced area for the children to play and explore. Also to finish it off the "Men in sheds@Findon" have made us a wonderful mud kitchen to go in our muddy area which staff and children are delighted with. This will really enhance the children's creative play

especially as the muddy area is one of their favourites to play in.

We are now very busy learning new and old songs and making props and scenery for our end of year Summer concert in July which is a time when our parents come to watch and we say goodbye to all our children that are moving on to school. We will be holding a raffle so if anyone is able to donate raffle prizes that would be very much appreciated.

As some of you may be aware our pre school is in need of a new more modern building and we are looking for funds, donations and other ways and ideas to help raise money for the building. If you can help in anyway with this matter please contact the Preschool.



Findon Village Gardens Association

Our next meeting is at the Village Hall on Friday 26th July at 7:30pm. The speaker is John Oliver, who will tell us about the history of RSPB Pulborough Brooks. Members and guests welcome.

The Summer Flower Show
is at the Village Hall
on Saturday 3rd August at 2pm

Youth Club

Every Thursday
during **school term time**
Different themes every week,
Ages 12+ -
5.00pm till 6.30pm
at The Rectory Findon



MONARCHS WAY Wellbeing Clinic

36 Cross Lane, Findon Village

**Sports & Therapeutic Massage therapies for
general aches and pains, arthritis, sports,
recreational and occupational injuries, stress and
stress related conditions and general wellbeing.**

By appointment only – please call 07841 636727

www.monarchswayclinic.co.uk

Tom Langford Services

Plumbing, Heating,
Drainage, Gas

Free Estimates
24 hour Callout

Small Job Specialist
Gas Safe Registered

07836 479493

Bob Hendy Electrician

Installations
Re-Wiring
Security Lighting
Fault Finding

*24 Hour service
No Call Out Fee*

01903 877204

07850771246

Peckhams Butchers

*Locally produced meat,
cut to your requirements*

Daily deliveries of
fresh fruit & vegetables.

The Square, Findon

Tel: 01903 873202

F Silverthorne Fishmongers

Quality Fish Est. 1907
145 Montague St, Worthing

Deliveries to Findon

(Thursday & Friday Mornings)

Tel. 01903 200854

Call by 9:30am on the day,
or the day before your delivery

Findon Accountancy

Chartered Certified Accountants

Findon based, reasonable rates

Full range of business & personal accounting
and taxation services available

Ken Elliott FCCA, FCIS

Telephone 01903 872589

Email: kenelliott@findonaccountancy.co.uk

Web: www.findonaccountancy.co.uk

Findon, Clapham & Patching Churches - June

Walking together in the Way of Christ and sharing His love with others

www.findon-clapham-patching-churches.com

Sunday 7 th July Trinity 3	08.00am 10.00am 5.00pm	Eucharist at Findon Church Sung Eucharist at Clapham Church Worship & Praise Service at Findon Church
Sunday 14 th July Trinity 4	08:00am 09.30am	Eucharist at Patching Church Sung Eucharist at Findon Church
Sunday 21 st July Trinity 5	08.00am 09.30am 10.00am	Eucharist at Findon Church Family Communion at Findon Church Sung Eucharist at Patching Church
Sunday 28 th July Trinity 6	08.00am 09.30am 10.00am	Eucharist at Clapham Church Sung Eucharist at Findon Church Family Service at Patching Church
Sunday 4 th August Trinity 7	08.00am 10.00am 10.00am	Eucharist at Findon Church Worship and Praise Service at Findon Sung Eucharist at Clapham Church

Baptisms – June: Finn Thomas, Evelyn Hoskins

Weddings - June: Paul Keenan and Sarah Tester, Phillip Johnson and Emily Morgan

Messy Church 1st Tuesday of the month (2nd July). TERM TIME ONLY. Starting at 3.30pm-5.45pm at Findon Village Hall. All children and their grown-ups welcome.

Youth club Every Thursday, with different themes every week (during school term time only). Ages 12+, 5pm till 6.30pm at The Rectory, Findon.

Curry Nights The next Findon Tajdar Curry Nights are 1st Monday of the month 1st July (Ladies) 7pm and last Thursday of the month, 25th July (Men) at 7.30pm.

Quiet Time in Findon Church. 2nd Monday of the month (8th July).

Afternoon Plus – 3rd Thursday of the month at 2.30pm. Different events every month, details on the pew sheets or contact the rectory office.

Light Lunch @ 1pm last Tues of the month, at Findon Village Hall. £5. Everyone welcome

Rev. Helena Buqué, Priest in Charge and Rev. Colin Cox, Curate:
c/o The Rectory, School Hill, Findon BN14 0TR.
Tel: 873601, findoncrectory@gmail.com



broadwater osteopathic practice
exceptional treatment from head to toe

Exceptional care by an experienced, friendly team.

Weekend & evening appointments.

Free onsite parking.

£5 OFF

Mention this advert & receive £5 OFF your visit to BOP*

**T&Cs apply (selected therapists only)*

Osteopathy, Cranial Osteopathy, Sports Therapy, Chiropody, Hypnotherapy, Counselling, Homeopathy, Bowen, Emmett, Massage, Acupuncture...& much more!

2 Sompting Road, Worthing BN14 9EP 01903 820206

worthingosteopathy.com

DOVETAIL
Kitchens

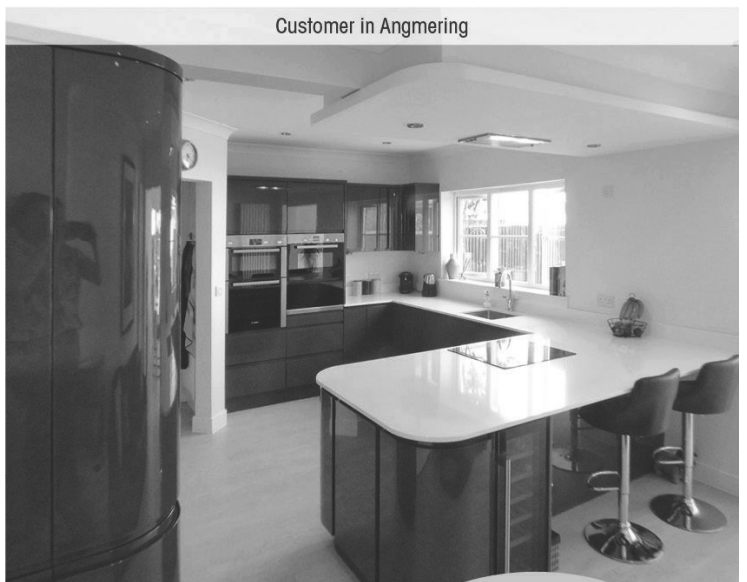
The little kitchen company with big results!

Pop into our homely showroom with our six best selling kitchen ranges on display and let us put a smile on your face with our prices

Customer in Angmering



Customer in Angmering



Family run local business • Design & full installation • Dry fits/Supply only
 • Removing walls to create open plan • Bi-folds, sky lanterns, orangeries

Our 2019 diary is now open and taking bookings so don't delay!

We are on Long Furlong, directly opposite Clapham Village hall

Gosling Croft Business Centre,
 Long Furlong, Clapham, West
 Sussex BN13 3UT

Please call: 01903 871 115
www.dovetail-kitchens.co.uk



Village Hall July 2019
 For all booking enquiries please
 Email findonhallbooking@gmail.com
 Phone no: 07598 144802

We aim to respond to missed calls within 48hrs.

NB. Booking times quoted are not necessarily the event start times

Weekly	Day	Time
Carpet Bowls	Monday	14:30
Lambstails (Term Time)	Thursday	10:00 – 12:00
Line Dancing	Wednesdays	09:45
Danceaholics	Sunday	19:30
Just Yoga	Monday	10:30
Tai Chi	Friday	10:00 – 13:00
You Yoga	Tuesday	18:45
	Sunday (7 th)	09:30
Reduce Stress & Stiffness Yoga	Wednesday	19:30
Paracise	Wednesday (3 rd , 24 th , 31 st)	14:00

Fortnightly	Date	Time
Circle Dancing	1 st 15 th 29 th	19:10

Monthly	Date	Time
Bead Magicians	16 th	09:00
Downs WI	9 th , 18 th	13:45, 14:00
Gardens Association	26 th	18:30
Messy Church	2 nd	15:30
Village WI	11 th	18:45
Meditation	22 nd	19:30
Tastevin	4 th ,	19:00
Light Lunch @ one	30 th	12:00
200 Club	n/a	18:00

Committee Room
 N/A

Other Events	Date	Time
FVHT Fun Dog Show	6 th	13:00 (Registration at 13:30)

The Village Hall website www.findonvillagehall.com
 provides contact and booking details as well as listings of forthcoming events

Buying ■ Selling ■ Letting ■ Commercial ■ New Homes

Michael
Jones
& Curtis



Cross Lane, Findon Village

A deceptively spacious four/five bedroom detached residence with a wealth of features including a stunning open plan kitchen/breakfast/family room leading to the sun terrace with panoramic views. Versatile accommodation, ensuite facilities to the master bedroom. Parking for numerous vehicles, garage. Viewing essential.

Asking Price £695,000

Findon Office 01903 872949 156 Findon Road, Findon Valley BN14 0EL www.michaeljones.co.uk

Offices in Worthing, Lancing, Goring, Findon, Broadwater and Rustington

