

MYSTERY PAINTING

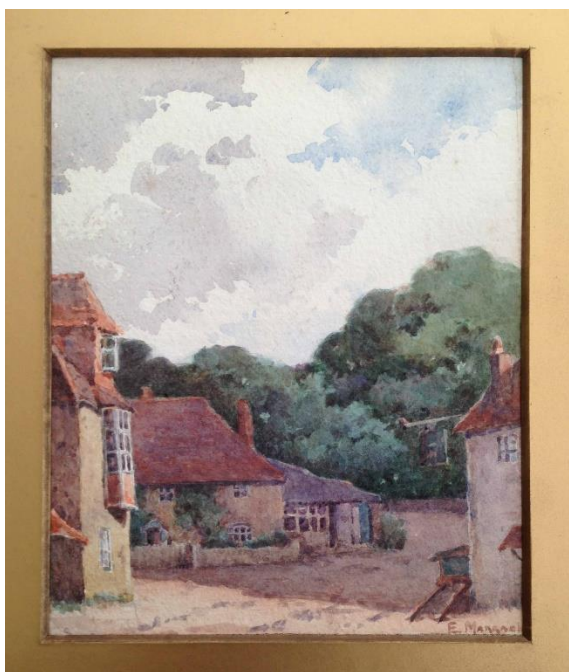
The Findon Village website recently received an interesting message from a lady in Lincolnshire as follows;

I thought you may be interested to see a watercolour painting I bought from an Antique Centre in Lincolnshire.

It is quite old and the frame was in quite a poor state. When I removed the frame, hidden under the mount was the inscription regarding Findon. I've since found a similar view on the website and I thought you may be interested to see it (below).

Perhaps someone local may know who the artist was? It is written in capital letters and says E Marrack.

Has anyone heard of the artist? If so, please let us know at findonwebsite@gmail.com



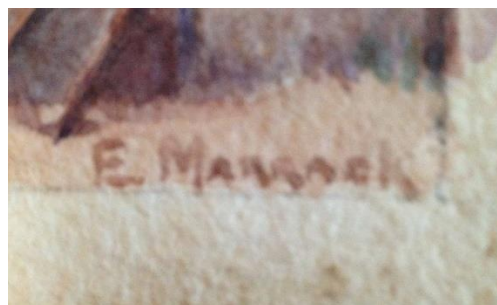
The painting



Similar view



Under the mount



The artist